

# Hollingwood

**Overview**  
 Imposing at first sight, this outstanding home presents a succession of pleasures. The bay windowed lounge complements a delightful family kitchen with a dining area opening out to the garden. A dual access shower room means three of the four bedrooms have en-suite facilities.

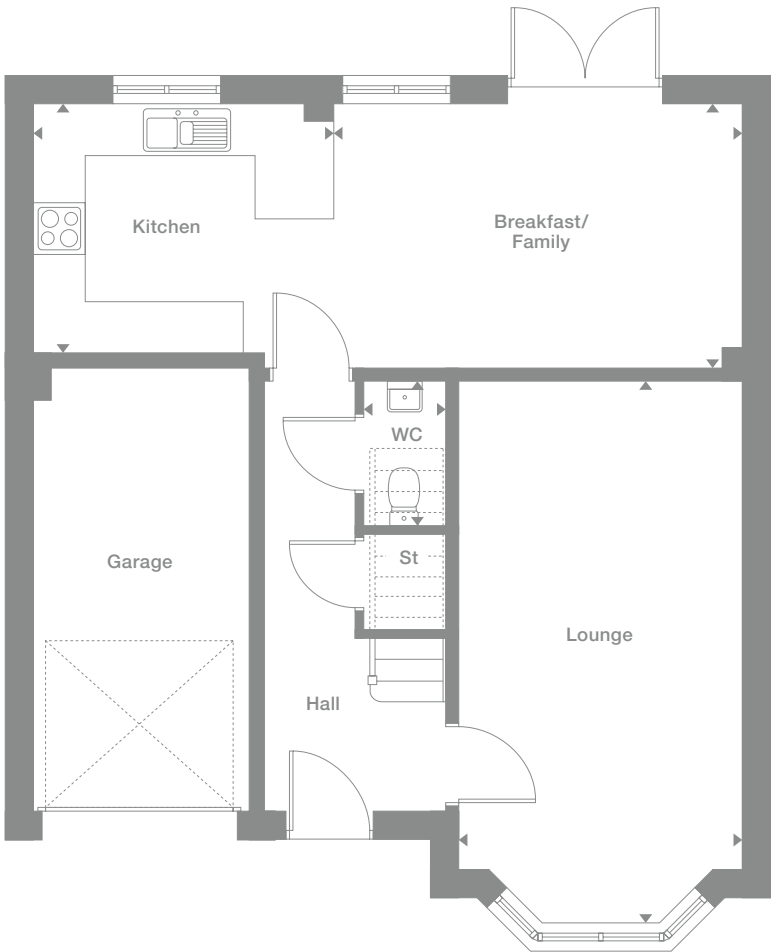
- Ground Floor**
- Lounge**  
3.264m x 6.222m max  
10'9" x 20'5"
- Kitchen**  
3.464m x 2.880m  
11'4" x 9'5"
- Breakfast/Family**  
4.700m x 3.050m  
15'5" x 10'0"
- WC**  
0.946m x 1.650m  
3'1" x 5'5"
- First Floor**
- Master Bedroom**  
3.264m x 4.436m  
10'9" x 14'7"
- En-Suite 1**  
2.275m max x 1.400m max  
7'6" x 4'7"
- Bedroom 2**  
4.115m max x 3.193m  
13'6" x 10'6"
- En-Suite 2**  
2.458m max x 1.825m max  
8'1" x 6'0"
- Bedroom 3**  
3.340m x 2.807m  
10'11" x 9'3"
- Bedroom 4**  
2.658m x 2.961m  
8'9" x 9'9"
- Bathroom**  
1.980m x 1.700m  
6'6" x 5'7"

**Plots**  
 20, 21\*,  
 39\*, 40\*,  
 134\*, 137

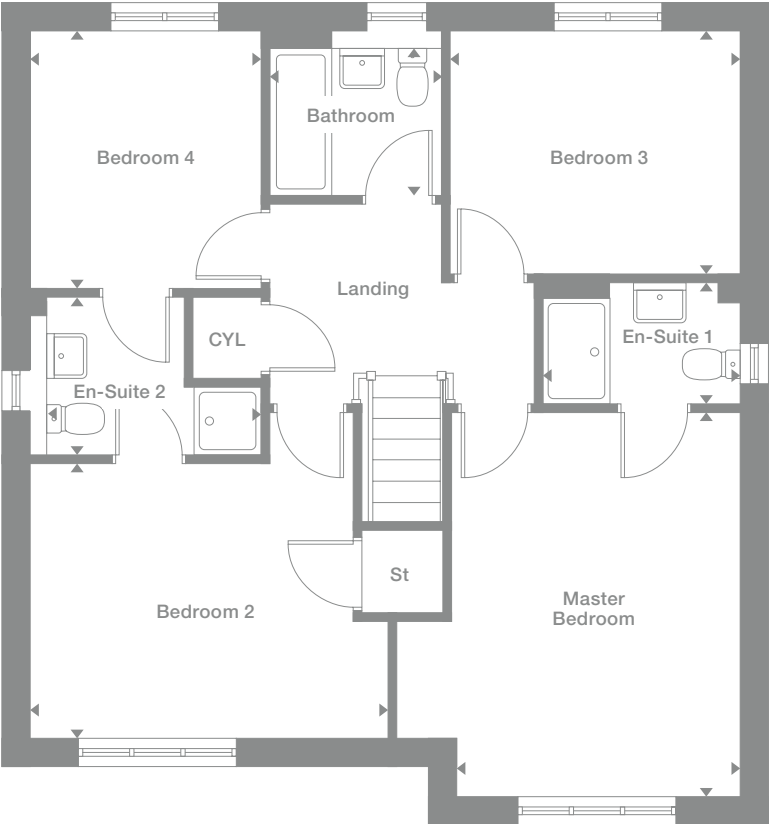
**Floor Space**  
 1,341 sq ft



## Ground Floor



## First Floor



Photography represents typical Miller Homes' interiors and exteriors. All plans in this brochure are not drawn to scale and are for illustrative purposes only. Consequently, they do not form part of any contract. Room layouts are provisional and may be subject to alteration. Please refer to the 'Important Notices' section at the back of this brochure for more information.

\* Plots are a mirror image of plans shown above

# Specification

- ✓ Standard
- Not Available

	Hopton	Beeley	Morley	Castleton	Draper	Emmett	Milton	Hayfield	Pomeroy	Whitwell	Walton	Darley	Hollingwood
<b>Kitchens</b>													
Contemporary styled fitted kitchen with choice of mix-n-match frontals	✓	✓	✓	✓	✓	✓	✓	✓	✓	✓	✓	✓	✓
Square edged worktop with upstand to wall	✓	✓	✓	✓	✓	✓	✓	✓	✓	✓	✓	✓	✓
Stainless steel one and a half bowl sink (where layout permits) with monobloc mixer tap	✓	✓	✓	✓	✓	✓	✓	✓	✓	✓	✓	✓	✓
Stainless steel single bowl sink with monobloc mixer tap to utility (where applicable)	-	-	-	-	✓	✓	-	-	-	✓	✓	-	-
Stainless steel 600mm chimney hood and splashback to hob	✓	✓	✓	✓	✓	✓	✓	✓	✓	✓	✓	✓	✓
Stainless steel 4-burner gas hob	✓	✓	✓	✓	✓	✓	✓	✓	✓	✓	✓	✓	✓
Stainless steel single fan oven	✓	✓	✓	✓	✓	✓	✓	✓	✓	-	-	-	-
Stainless steel double fan oven	-	-	-	-	-	-	-	-	-	✓	✓	✓	✓
Housing for integrated fridge/freezer (appliances not included)	✓	✓	✓	✓	✓	✓	✓	✓	✓	✓	✓	✓	✓
Plumbing and electrics for washing machine	✓	✓	✓	✓	✓	✓	✓	✓	✓	✓	✓	✓	✓
Plumbing and electrics for dishwasher	✓	✓	✓	✓	✓	✓	✓	✓	✓	✓	✓	✓	✓
3 spot energy efficient LED track light to ceiling	✓	✓	✓	✓	✓	✓	✓	✓	✓	✓	✓	✓	✓
USB charging outlet	✓	✓	✓	✓	✓	✓	✓	✓	✓	✓	✓	✓	✓
<b>Bathrooms</b>													
Ideal Standard's contemporary styled 'Concept Cube' bathroom suite	✓	✓	✓	✓	✓	✓	✓	✓	✓	✓	✓	✓	✓
Water efficient dual flush toilet	✓	✓	✓	✓	✓	✓	✓	✓	✓	✓	✓	✓	✓
Soft close toilet seat	✓	✓	✓	✓	✓	✓	✓	✓	✓	✓	✓	✓	✓
Lever operated chrome monobloc mixer taps to basin	✓	✓	✓	✓	✓	✓	✓	✓	✓	✓	✓	✓	✓
Lever operated chrome bath shower mixer taps to bath with wall mounted riser rail	✓	-	-	-	-	-	-	-	-	-	-	-	-
Contemporary styled chrome bath filler with wall mounted control	-	✓	✓	✓	✓	✓	✓	✓	✓	✓	✓	✓	✓
Low profile shower tray with stainless steel framed clear glass enclosure	-	-	-	-	-	-	-	-	-	-	✓	-	-
Bar style chrome shower mixer valve to shower enclosure	-	-	-	-	-	-	-	-	-	-	✓	-	-
Energy efficient LED downlighters to ceiling	✓	✓	✓	✓	✓	✓	✓	✓	✓	✓	✓	✓	✓
Half height ceramic tiling to walls incorporating sanitaryware appliances	✓	✓	✓	✓	✓	✓	✓	✓	✓	✓	✓	✓	✓
Full height ceramic tiling to shower area	✓	-	-	-	-	-	-	-	-	-	✓	-	-
<b>En-Suites (where applicable)</b>													
Ideal Standard's contemporary styled 'Concept Cube' sanitaryware	-	✓	✓	✓	✓	✓	✓	✓	✓	✓	✓	✓	✓
Water efficient dual flush toilet	-	✓	✓	✓	✓	✓	✓	✓	✓	✓	✓	✓	✓
Soft close toilet seat	-	-	-	-	-	-	-	-	-	✓	✓	✓	✓
Lever operated chrome monobloc mixer taps to basin	-	✓	✓	✓	✓	✓	✓	✓	✓	✓	✓	✓	✓
Bar style chrome shower mixer valve	-	✓	✓	✓	✓	✓	✓	✓	✓	✓	✓	✓	✓
Low profile shower tray with stainless steel framed clear glass enclosure	-	✓	✓	✓	✓	✓	✓	✓	✓	✓	✓	✓	✓
Energy efficient LED downlighters to ceiling	-	✓	✓	✓	✓	✓	✓	✓	✓	✓	✓	✓	✓
Half height ceramic tiling to walls incorporating sanitaryware appliances	-	✓	✓	✓	✓	✓	✓	✓	✓	✓	✓	✓	✓
Full height ceramic tiling to shower area	-	✓	✓	✓	✓	✓	✓	✓	✓	✓	✓	✓	✓

All customer choices and optional extras can only be included at an early stage of building construction please check with the Sales Adviser for specific details. These sales particulars do not constitute a contract, form part of a contract or a warranty. Please refer to the 'Important Notice' section at the back of this brochure for more information.