



**Saddlers Chase
Doncaster**

millerhomes

the place to be®

- 04 Living in Doncaster
- 08 Welcome Home
- 10 Plot Information
- 12 Floorplans
- 34 The Miller Difference
- 40 Useful Contacts
- 42 Contact Us

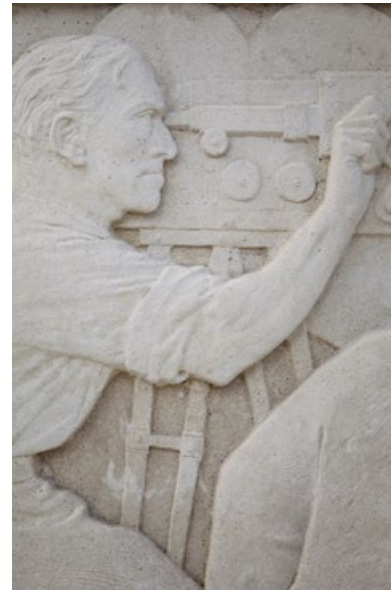
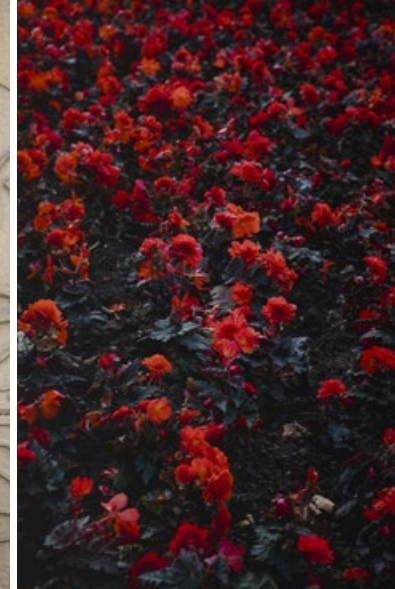
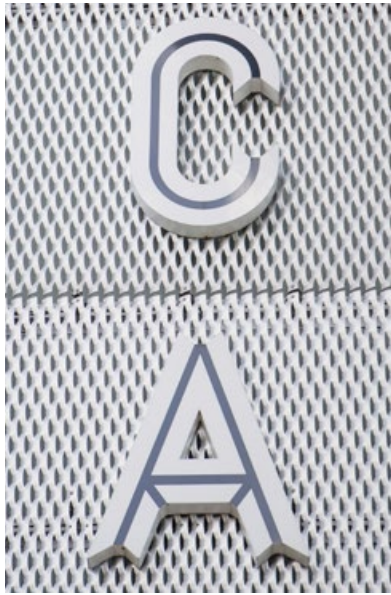
A new home. The start of a whole new chapter for you and your family. And for us, the part of our job where bricks and mortar becomes a place filled with activity and dreams and fun and love. We put a huge amount of care into the houses we build, but the story's not finished until we match them up with the right people. So, once you've chosen a Miller home, we'll do everything we can to make the rest of the process easy, even enjoyable. From the moment you make your decision until you've settled happily in, we'll be there to help.



Quality of life is about the details of everyday living. From the little things, like knowing the nearest place to pick up a pint of milk, to more important matters like finding the right school or having a health centre nearby, you need to know that the community you're moving to will support you and your family, as well as being a pleasant place to live. So here's some useful information about the area around Saddlers Chase.



Two miles from Doncaster city centre, Saddlers Chase is within ten minutes' drive of both the M18 and the A1(M), bringing Sheffield within half an hour's drive. Leeds and Grimsby can both be reached within an hour. Local buses stop in Bawtry Road, ten minutes' walk from the development, and Doncaster Railway Station is a major hub with excellent intercity connections, including direct services to Manchester, Liverpool, Edinburgh and London. Kings Cross Station is an hour and three quarters away by train.



Welcome home

Set in an inviting, peaceful area near Doncaster Racecourse, this prestigious selection of energy efficient three, four and five bedroom homes brings an exciting new neighbourhood into an exceptional location. Within walking distance of the city centre, and with shops, a supermarket and outstanding leisure attractions nearby, its easy access to two motorways and a major rail interchange makes it a perfect base for both local amenities and national travel. Welcome to Saddlers Chase..

The artist's impressions (computer-generated graphics) have been prepared for illustrative purposes and are indicative only. They do not form part of any contract, or constitute a representation or warranty. External appearance may be subject to variation upon completion of the project.





Doncaster Racecourse Track

- Denton**
See Page 12
- Braxton**
See Page 14
- Hampton**
See Page 16
- Glenwood**
See Page 18
- Charleswood**
See Page 20
- Beauwood**
See Page 22
- Briarwood**
See Page 24
- Denford**
See Page 26
- Faverwood**
See Page 28
- Grayford**
See Page 30
- Kingford**
See Page 32
- Affordable Housing**



- Electrical Sub-Station S/S
- Shed
- Visitor Parking V
- Bin Collection Point BCP
- Local Equipped Area of Play LE.A.P.

The artist's impressions (computer-generated graphics) have been prepared for illustrative purposes and are indicative only. They do not form part of any contract, or constitute a representation or warranty. External appearance may be subject to variation upon completion of the project. The location of affordable housing is indicative and the tenure of homes may be subject to change. Please note that the site plan is not drawn to scale.

Denton

Overview

French doors add fresh, open appeal to a welcoming, light-filled kitchen and dining room that also features a separate laundry area. There is a downstairs WC, a family bathroom and generous storage space, and the third bedroom could be transformed into an impressive home office.

Ground Floor

Lounge
3.58m x 4.45m
11'9" x 14'8"

Kitchen/Dining
3.35m x 4.74m
11'0" x 15'7"

Laundry
1.08m x 2.99m
3'7" x 9'10"

WC
1.08m x 1.65m
3'7" x 5'5"

First Floor

Principal Bedroom
4.53m x 2.71m
14'10" x 8'11"

Bedroom 2
2.15m x 4.38m
7'1" x 14'5"

Bedroom 3
2.28m x 3.34m
7'6" x 11'0"

Bathroom
1.92m x 2.00m
6'4" x 6'7"

Floor Space

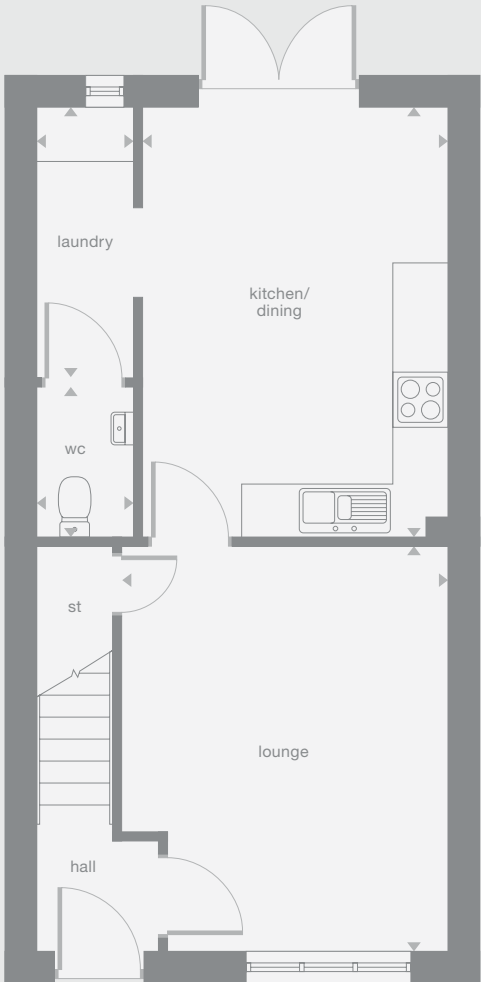
907 sq ft

† Window not applicable to all plots. Please see Development Sales Manager for details.

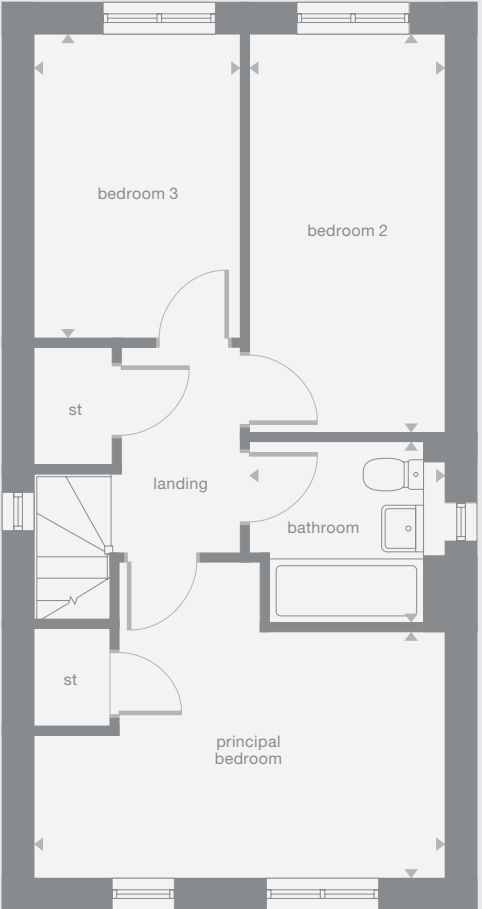
Plots may be a mirror image of the floor plans. Please see Development Sales Manager for details



Ground Floor



First Floor



Photography/CGI represents typical Miller Homes' interiors and exteriors. Please note elevational treatments may vary. All plans in this brochure are not drawn to scale and are for illustrative purposes only. Consequently, they do not form part of any contract. Room layouts are provisional and may be subject to alteration. Please refer to the 'Important Notice' section at the back of this brochure for more information.

Braxton

Overview

Both the lounge and the dining kitchen are dual aspect, with french doors enhancing the family space. Practical touches include a laundry room, downstairs WC and generous storage space. The bright landing leads to the bathroom and three bedrooms, including an en-suite, dual aspect principal bedroom.

Ground Floor

- Lounge**
3.74m x 5.58m
12'2" x 18'4"
- Kitchen/Dining**
2.90m x 2.65m
9'6" x 8'9"
- Laundry**
2.09m x 1.88m
6'10" x 6'2"
- Family**
2.90m x 2.92m
9'6" x 9'7"
- WC**
1.09m x 1.55m
3'7" x 5'1"

First Floor

- Principal Bedroom**
3.01m x 2.77m
9'11" x 9'1"
- En-Suite**
2.11m x 1.24m
6'11" x 4'1"
- Bedroom 2**
2.95m x 3.28m
9'8" x 10'9"
- Bedroom 3**
1.70m x 2.20m
5'7" x 7'3"
- Bathroom**

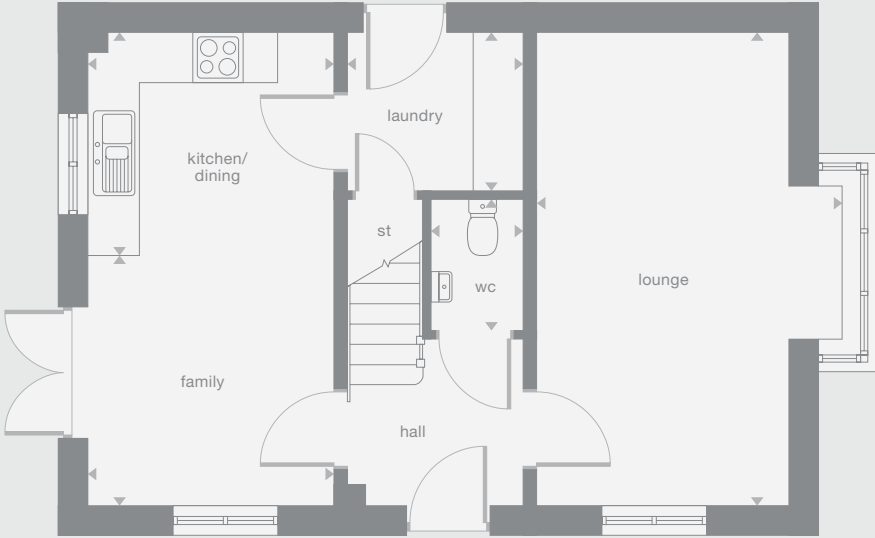
Floor Space

996 sq ft

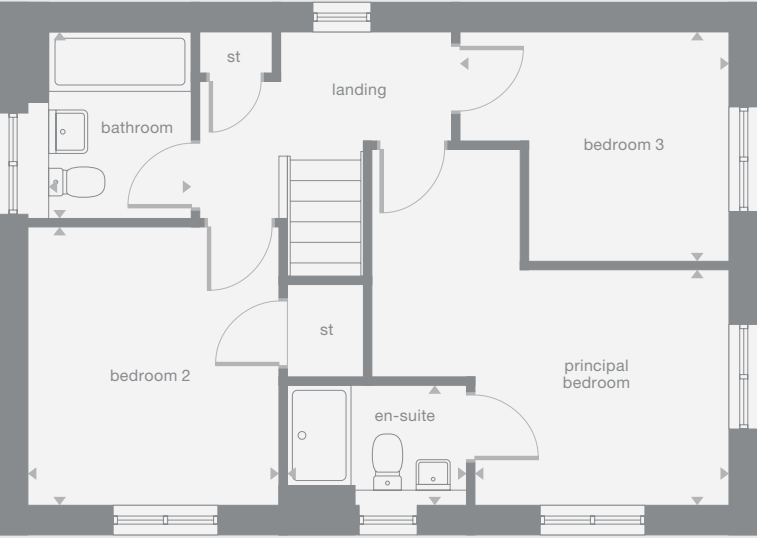
Plots may be a mirror image of the floor plans. Please see Development Sales Manager for details



Ground Floor



First Floor



Photography/CGI represents typical Miller Homes' interiors and exteriors. Please note elevational treatments may vary. All plans in this brochure are not drawn to scale and are for illustrative purposes only. Consequently, they do not form part of any contract. Room layouts are provisional and may be subject to alteration. Please refer to the 'Important Notice' section at the back of this brochure for more information.

Hampton

Overview

The superb kitchen, with its dining area opening to the garden and the light, elegant lounge form a flexible backdrop to everyday life. The family bathroom shares the first floor with three bedrooms, and the en-suite principal bedroom features a dressing room.

Ground Floor

- Lounge**
3.42m x 3.57m
11'3" x 11'9"
- Kitchen**
3.43m x 3.06m
11'3" x 10'0"
- Family/Dining**
5.47m x 2.38m
17'11" x 7'10"
- WC**
1.95m x 1.47m
6'5" x 4'10"

First Floor

- Principal Bedroom**
3.30m x 3.14m
10'10" x 10'4"
- En-Suite**
2.18m x 1.87m
7'2" x 6'2"
- Dressing**
2.07m x 1.68m
6'10" x 5'6"
- Bedroom 2**
2.81m x 3.85m
9'3" x 12'8"
- Bedroom 3**
2.56m x 3.65m
8'5" x 12'0"
- Bathroom**
1.98m x 2.21m
6'6" x 7'3"

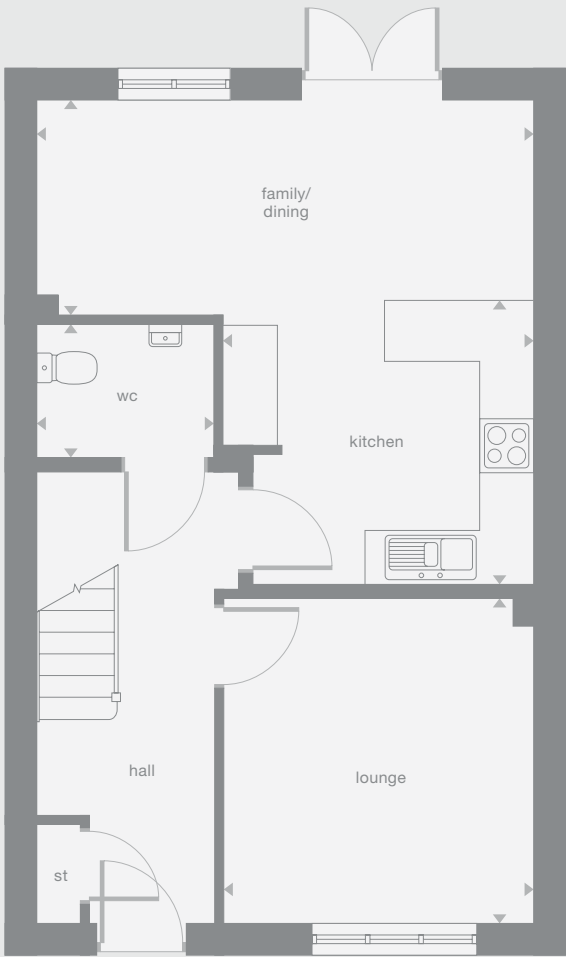
Floor Space

1,069 sq ft

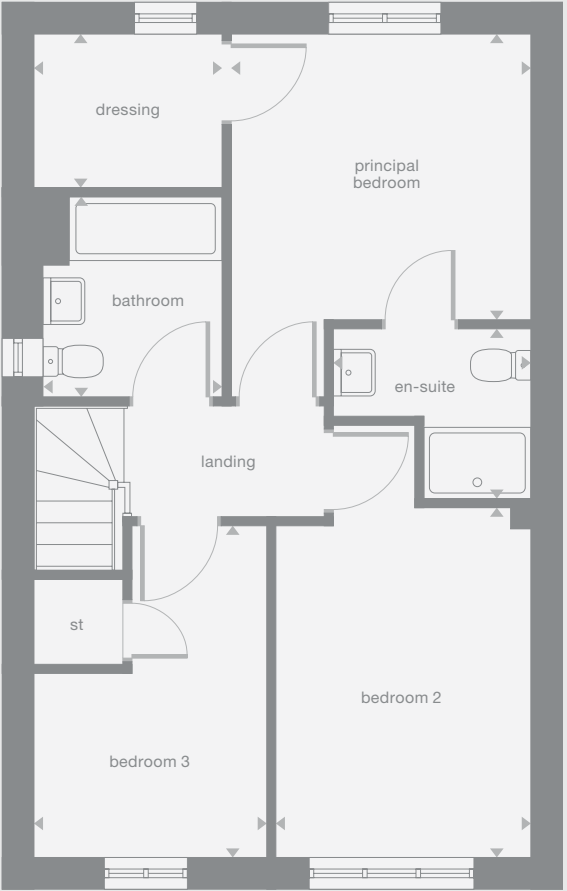
Plots may be a mirror image of the floor plans. Please see Development Sales Manager for details



Ground Floor



First Floor



Photography/CGI represents typical Miller Homes' interiors and exteriors. Please note elevational treatments may vary. All plans in this brochure are not drawn to scale and are for illustrative purposes only. Consequently, they do not form part of any contract. Room layouts are provisional and may be subject to alteration. Please refer to the 'Important Notice' section at the back of this brochure for more information.

Glenwood

Overview

A bay window brings light flooding into the lounge, the practical family kitchen has a separate laundry, and french doors make the dining area especially inviting. The bathroom and four bedrooms, one of them en-suite, are reached via a landing with a generously sized cupboard.

Ground Floor

- Lounge**
3.56m x 5.30m
11'8" x 17'5"
- Kitchen**
2.72m x 2.86m
8'11" x 9'5"
- Laundry**
2.05m x 1.56m
6'9" x 5'2"
- Family/Dining**
3.31m x 4.52m
10'10" x 14'10"
- WC**
1.00m x 1.74m
3'3" x 5'9"

First Floor

- Principal Bedroom**
3.11m x 3.72m
10'3" x 12'3"
- En-Suite**
2.01m x 1.19m
6'7" x 3'11"
- Bedroom 2**
2.93m x 3.92m
9'7" x 12'11"
- Bedroom 3**
2.83m x 2.65m
9'3" x 8'8"
- Bedroom 4**
3.01m x 2.47m
9'11" x 8'2"
- Bathroom**
1.70m x 1.99m
5'7" x 6'7"

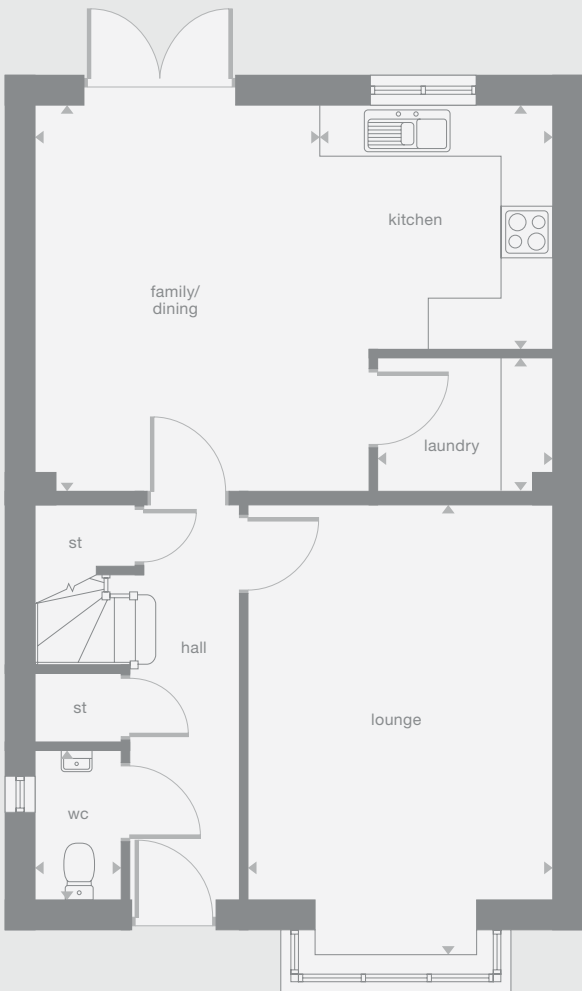
Floor Space

1,222 sq ft

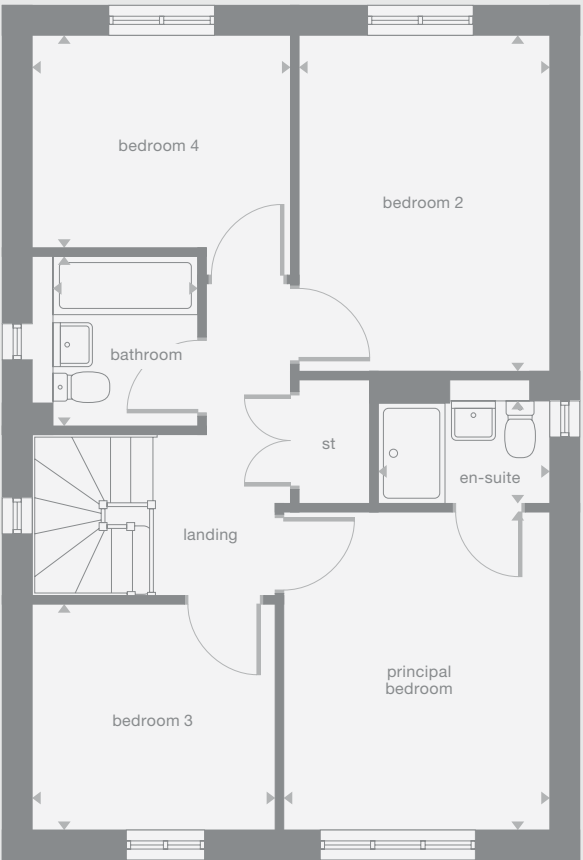
Plots may be a mirror image of the floor plans. Please see Development Sales Manager for details



Ground Floor



First Floor



Photography/CGI represents typical Miller Homes' interiors and exteriors. Please note elevational treatments may vary. All plans in this brochure are not drawn to scale and are for illustrative purposes only. Consequently, they do not form part of any contract. Room layouts are provisional and may be subject to alteration. Please refer to the 'Important Notice' section at the back of this brochure for more information.

Charleswood

Overview

From the striking bay-windowed lounge to the four bedrooms, one a en-suite bedroom with a dressing area, this is a home of unmistakable prestige. The family kitchen and dining room, with dual windows, french doors and separate laundry, is perfect for lively social gatherings.

Ground Floor

- Lounge
3.17m x 4.58m
10'5" x 15'0"
- Kitchen
3.16m x 2.86m
10'5" x 9'5"
- Laundry
1.85m x 1.50m
6'1" x 4'11"
- Dining
2.08m x 2.86m
6'10" x 9'5"
- Family
3.14m x 2.86m
10'4" x 9'5"
- WC
1.80m x 1.50m
5'11" x 4'11"

First Floor

- Principal Bedroom
5.11m x 3.03m
16'9" x 9'11"
- En-Suite
2.57m x 1.43m
8'5" x 4'8"
- Dressing
1.86m x 1.35m
6'2" x 4'5"
- Bedroom 2
3.17m x 3.52m
10'5" x 11'7"
- Bedroom 3
4.52m x 2.55m
14'10" x 8'5"
- Bedroom 4
3.77m x 2.96m
12'4" x 9'9"
- Bathroom
1.83m x 2.22m
6'0" x 7'4"

Floor Space

1,378 sq ft

Plots may be a mirror image of the floor plans. Please see Development Sales Manager for details



Ground Floor



First Floor



Photography/CGI represents typical Miller Homes' interiors and exteriors. Please note elevational treatments may vary. All plans in this brochure are not drawn to scale and are for illustrative purposes only. Consequently, they do not form part of any contract. Room layouts are provisional and may be subject to alteration. Please refer to the 'Important Notice' section at the back of this brochure for more information.

Beauwood

Overview

From the bay-windowed lounge to the en-suite bedroom, this is a superb, feature-filled home. The kitchen, the study/family room and two of the four bedrooms are all dual aspect. The french doors enhance the open-plan kitchen, and the family bathroom includes a separate shower.

Ground Floor

- Lounge**
4.07m x 3.86m
13'4" x 12'8"
- Kitchen**
3.52m x 3.96m
11'7" x 13'0"
- Laundry**
2.12m x 1.76m
7'0" x 5'9"
- Dining**
3.48m x 2.83m
11'5" x 9'4"
- Study/Family**
2.05m x 2.77m
6'9" x 9'1"
- WC**
1.82m x 1.47m
6'0" x 4'10"

First Floor

- Principal Bedroom**
3.53m x 3.60m
11'7" x 11'10"
- En-Suite**
2.04m x 1.76m
6'8" x 5'9"
- Bedroom 2**
3.48m x 3.30m
11'5" x 10'10"
- Bedroom 3**
3.56m x 3.09m
11'8" x 10'2"
- Bedroom 4**
2.30m x 3.39m
7'7" x 11'2"
- Bathroom**
3.26m x 1.92m
10'9" x 6'4"

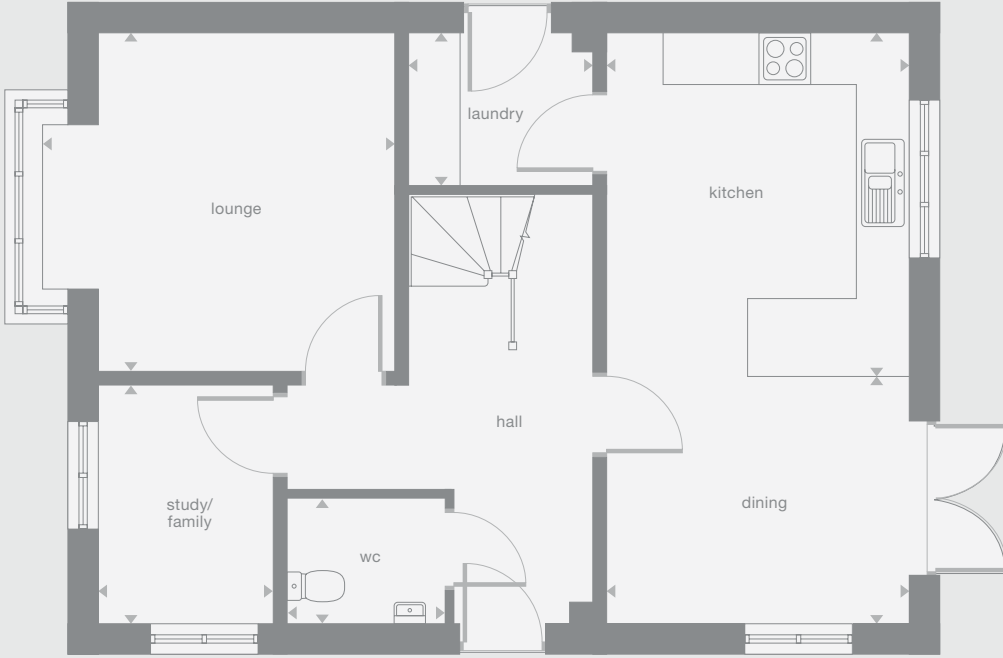
Floor Space

1,379 sq ft

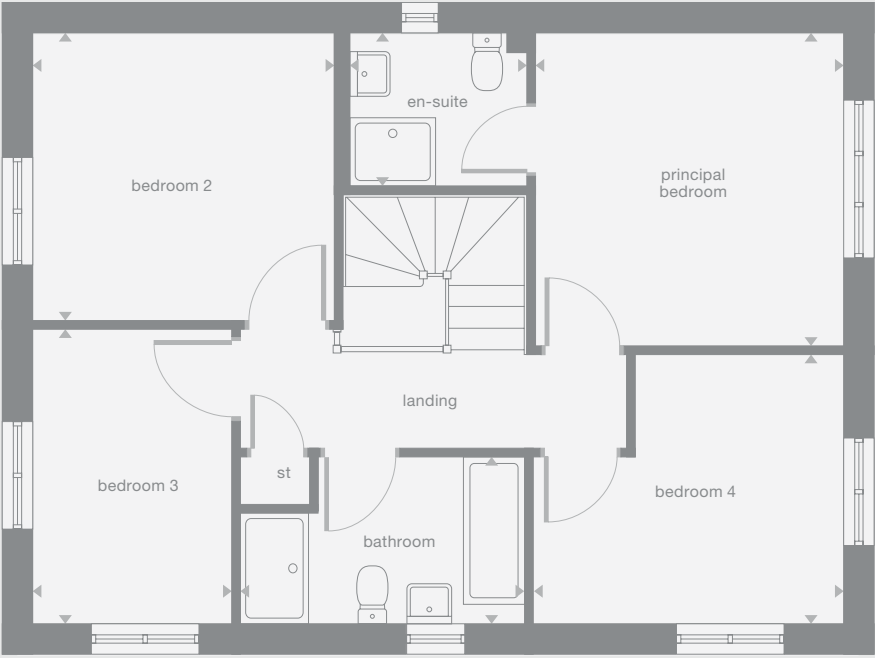
Plots may be a mirror image of the floor plans. Please see Development Sales Manager for details



Ground Floor



First Floor



Photography/CGI represents typical Miller Homes' interiors and exteriors. Please note elevational treatments may vary. All plans in this brochure are not drawn to scale and are for illustrative purposes only. Consequently, they do not form part of any contract. Room layouts are provisional and may be subject to alteration. Please refer to the 'Important Notice' section at the back of this brochure for more information.

Briarwood

Overview

With its stylish lounge and airy, open plan kitchen and dining room, this superb home is perfect for lively gatherings. There is a separate laundry room and a dedicated study, and the bright gallery landing opens on to the bathroom and four bedrooms, one of them en-suite.

Ground Floor

- Lounge**
3.56m x 5.14m
11'8" x 16'8"
- Kitchen**
3.36m x 2.99m
11'0" x 9'10"
- Laundry**
2.08m x 1.80m
6'10" x 5'11"
- Family/Dining**
3.91m x 3.84m
12'10" x 12'7"
- Study**
2.08m x 1.97m
6'10" x 6'6"
- WC**
2.08m x 1.52m
6'10" x 5'0"

First Floor

- Principal Bedroom**
3.56m x 3.13m
11'8" x 10'3"
- En-Suite**
2.16m x 1.30m
7'1" x 4'3"
- Bedroom 2**
3.62m x 3.51m
11'11" x 11'6"
- Bedroom 3**
4.19m x 2.75m
13'9" x 9'0"
- Bedroom 4**
2.80m x 2.73m
9'10" x 9'0"
- Bathroom**
2.38m x 2.16m
7'10" x 7'1"

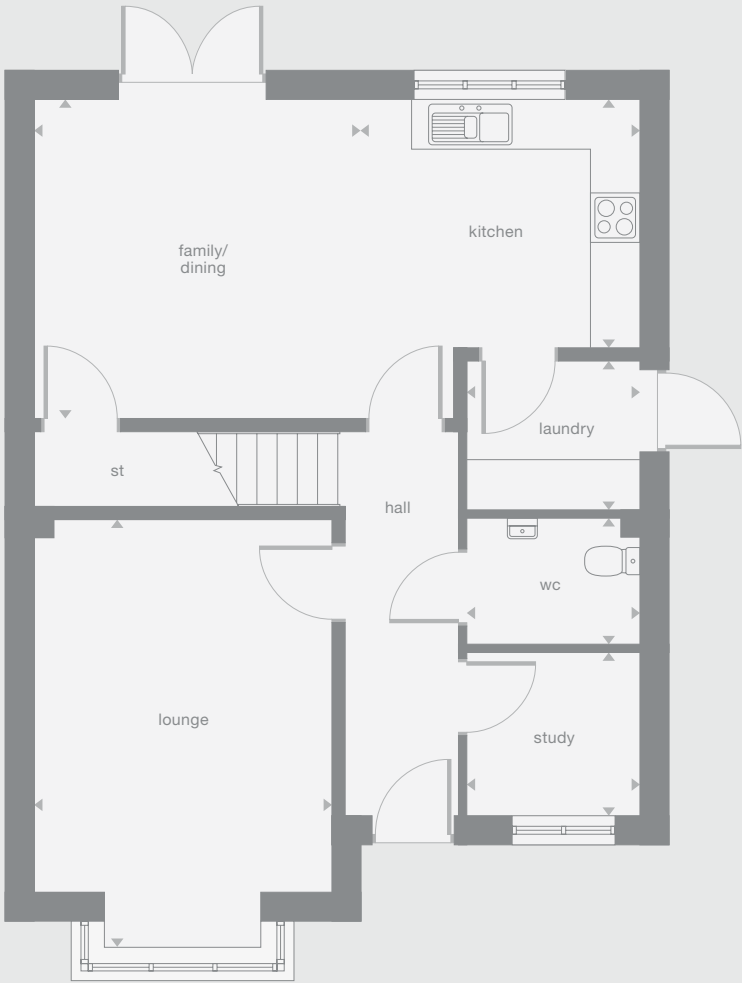
Floor Space

1,419 sq ft

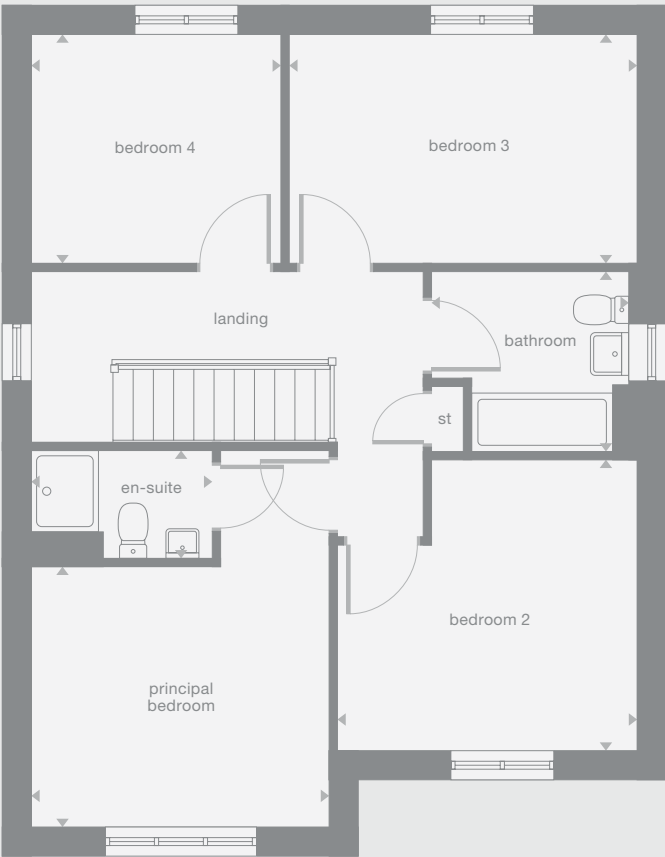
Plots may be a mirror image of the floor plans. Please see Development Sales Manager for details



Ground Floor



First Floor



Photography/CGI represents typical Miller Homes' interiors and exteriors. Please note elevational treatments may vary. All plans in this brochure are not drawn to scale and are for illustrative purposes only. Consequently, they do not form part of any contract. Room layouts are provisional and may be subject to alteration. Please refer to the 'Important Notice' section at the back of this brochure for more information.

Denford

Overview

From the assured elegance of the bay-windowed lounge to the five bedrooms, two of them en-suite and one with a dressing room, this is a breathtakingly impressive home. The L-shaped family kitchen, with its french doors and galley-style workspace, is perfect for large, lively gatherings.

Ground Floor

- Lounge**
3.78m x 4.78m
12'5" x 15'8"
- Kitchen**
4.18m x 2.81m
13'9" x 9'3"
- Laundry**
1.88m x 1.74m
6'2" x 5'9"
- Dining**
4.04m x 2.81m
13'3" x 9'3"
- Family**
4.04m x 2.75m
13'3" x 9'0"
- WC**
1.88m x 0.97m
6'2" x 3'2"

First

- Principal Bedroom**
3.78m x 3.12m
12'5" x 10'3"
- En-Suite 1**
2.46m x 1.18m
8'1" x 3'10"
- Dressing**
1.67m x 2.17m
5'6" x 7'2"
- Bedroom 2**
3.03m x 3.65m
9'11" x 12'0"
- En-Suite 2**
1.96m x 1.51m
6'5" x 4'11"
- Bedroom 3**
3.96m x 2.91m
13'0" x 9'7"
- Bedroom 4**
2.99m x 2.91m
9'10" x 9'7"
- Bedroom 5**
4.24m x 2.47m
13'11" x 8'1"
- Bathroom**
2.67m x 1.95m
8'9" x 6'5"

Floor Space

1,640 sq ft

Plots may be a mirror image of the floor plans. Please see Development Sales Manager for details



Ground Floor



First Floor



Photography/CGI represents typical Miller Homes' interiors and exteriors. Please note elevational treatments may vary. All plans in this brochure are not drawn to scale and are for illustrative purposes only. Consequently, they do not form part of any contract. Room layouts are provisional and may be subject to alteration. Please refer to the 'Important Notice' section at the back of this brochure for more information.

Faverwood

Overview

French doors fill the family kitchen and breakfast room with light, complementing an impressive lounge and dining room. The landing includes a useful cupboard, the bathroom features a separate shower, two of the four bedrooms are en-suite and the principal bedroom includes a dressing room.

Ground Floor

Lounge
3.20m x 5.19m
10'6" x 17'1"

Kitchen
3.92m x 3.04m
12'11" x 10'0"

Laundry
2.59m x 1.82m
8'6" x 6'0"

Family/Breakfast
4.13m x 4.62m
13'7" x 15'2"

Dining
2.66m x 3.31m
8'9" x 10'11"

WC
1.90m x 1.45m
6'3" x 4'9"

First

Principal Bedroom
2.91m x 3.51m
9'7" x 11'6"

En-Suite
1.68m x 2.07m
5'6" x 6'10"

Dressing
2.50m x 1.54m
8'3" x 5'1"

Bedroom 2
3.26m x 3.34m
10'9" x 11'0"

En-Suite 2
2.14m x 1.54m
7'1" x 5'1"

Bedroom 3
3.22m x 3.49m
10'7" x 11'6"

Bedroom 4
2.44m x 4.62m
8'0" x 15'2"

Bathroom
2.19m x 2.77m
7'2" x 9'1"

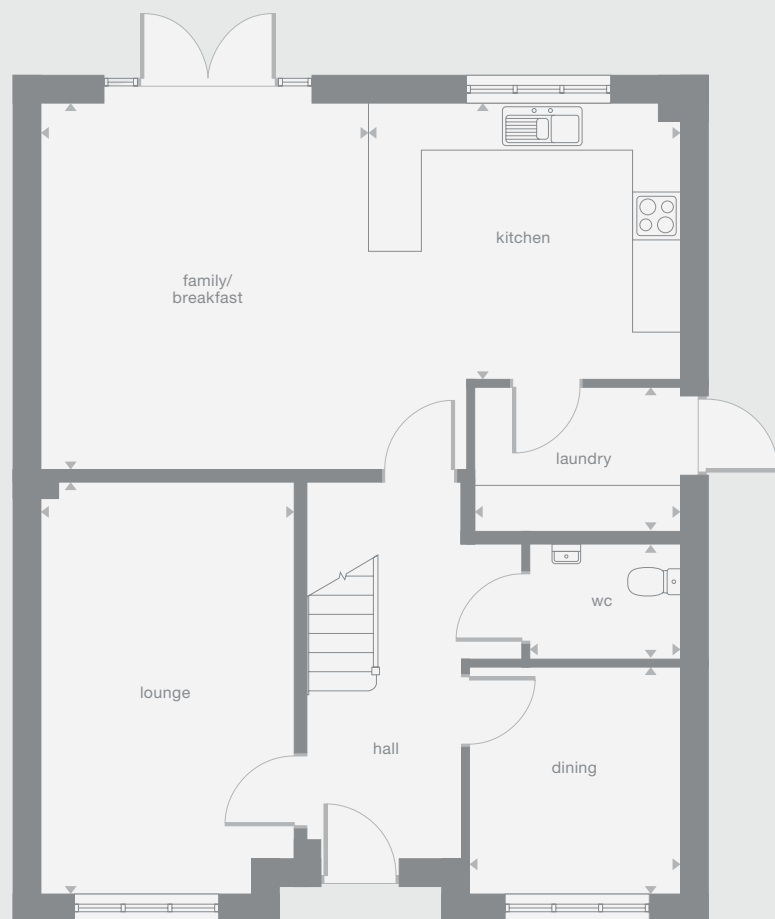
Floor Space

1,704 sq ft

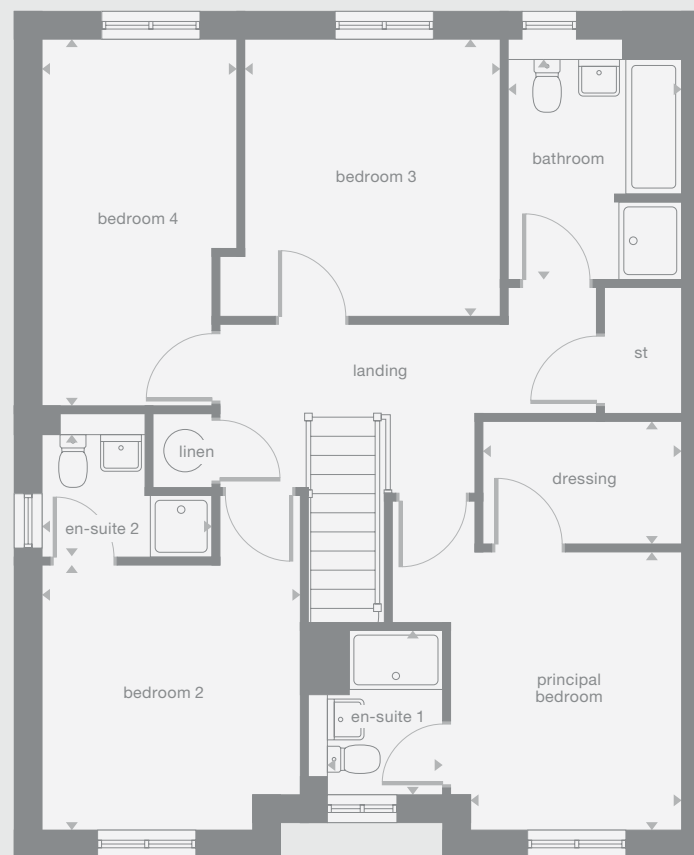
Plots may be a mirror image of the floor plans. Please see Development Sales Manager for details



Ground Floor



First Floor



Photography/CGI represents typical Miller Homes' interiors and exteriors. Please note elevational treatments may vary. All plans in this brochure are not drawn to scale and are for illustrative purposes only. Consequently, they do not form part of any contract. Room layouts are provisional and may be subject to alteration. Please refer to the 'Important Notice' section at the back of this brochure for more information.

Grayford

Overview

The impressive hall introduces an outstanding residence. The study and stylish lounge complement a family kitchen and dining area with french doors. There is a laundry, a bathroom with separate shower, two of the five bedrooms have an en-suite, and one has a walk-through dressing area.

Ground Floor

Lounge 3.52m x 4.76m 11'7" x 15'8"	Family 3.67m x 2.96m 12'1" x 9'9"
Kitchen 3.96m x 3.68m 13'0" x 12'1"	Study 3.48m x 2.27m 11'5" x 7'6"
Laundry 1.79m x 1.68m 5'11" x 5'6"	WC 1.59m x 1.68m 5'3" x 5'6"
Dining 2.68m x 3.68m 8'10" x 12'1"	

First

Principal Bedroom 3.49m x 3.97m 11'5" x 13'0"	Bedroom 3 3.59m x 3.26m 11'9" x 10'8"
En-Suite 1 2.40m x 1.36m 7'11" x 4'6"	Bedroom 4 3.05m x 3.15m 10'0" x 10'4"
Dressing 2.40m x 2.14m 7'11" x 7'0"	Bedroom 5 2.84m x 2.64m 9'4" x 8'8"
Bedroom 2 3.37m x 2.64m 11'1" x 8'8"	Bathroom 2.53m x 1.79m 8'4" x 5'11"
En-Suite 2 1.18m x 2.64m 3'10" x 8'8"	

Floor Space

1,780 sq ft

Plots may be a mirror image of the floor plans. Please see Development Sales Manager for details



Ground Floor



First Floor



Photography/CGI represents typical Miller Homes' interiors and exteriors. Please note elevational treatments may vary. All plans in this brochure are not drawn to scale and are for illustrative purposes only. Consequently, they do not form part of any contract. Room layouts are provisional and may be subject to alteration. Please refer to the 'Important Notice' section at the back of this brochure for more information.

Overview

Accessed from a superb entrance hall, both the study and the lounge feature bay windows and the island kitchen, incorporating bi-fold doors and rooflights, adjoins a dining room with french doors. The five bedrooms include two en-suites, and the family bathroom has a separate shower.

Ground Floor

- Lounge
3.83m x 5.84m
12'7" x 19'2"
- Kitchen
6.38m x 6.04m
20'11" x 19'10"
- Laundry
1.81m x 1.72m
5'11" x 5'8"
- Dining
3.73m x 3.49m
12'3" x 11'6"
- Study/Family
3.34m x 3.46m
11'0" x 11'5"
- WC
1.43m x 1.72m
4'9" x 5'8"

First

- Principal Bedroom
3.27m x 4.52m
10'9" x 14'10"
- En-Suite 1
2.46m x 1.54m
8'1" x 5'1"
- Dressing
2.46m x 2.56m
8'1" x 8'5"
- Bedroom 2
3.86m x 2.58m
12'8" x 8'6"
- En-Suite 2
2.53m x 1.43m
8'4" x 4'9"
- Bedroom 3
3.84m x 3.07m
12'7" x 10'1"
- Bedroom 4
3.81m x 2.49m
12'6" x 8'2"
- Bedroom 5
3.07m x 2.29m
10'1" x 7'7"
- Bathroom
2.53m x 2.01m
8'4" x 6'7"

Floor Space

2,088 sq ft

Plots may be a mirror image of the floor plans. Please see Development Sales Manager for details



Ground Floor



First Floor



Photography/CGI represents typical Miller Homes' interiors and exteriors. Please note elevational treatments may vary. All plans in this brochure are not drawn to scale and are for illustrative purposes only. Consequently, they do not form part of any contract. Room layouts are provisional and may be subject to alteration. Please refer to the 'Important Notice' section at the back of this brochure for more information.

The Miller Difference

The Miller Difference
Every home we build is the start of an adventure. For more than 90 years we've watched people stamp their individual personalities on the homes we build. What we create is your starting point. Our job is to make sure it's the best one possible.

Shaped around you
For more than three generations, we've been listening to our customers. We know what you expect: the highest quality materials, the most skilled workmanship, ready to be shaped around your lifestyle.

Built on trust
Figures and statistics matter. We have, for example, a five star rating for Customer Satisfaction, the best possible, from the Home Builders Federation.

Even more important, though, is the feedback we get from our customers. After we've been with them on the journey from their first enquiry to settling into their new home, well over 90% say they would recommend us. That's the real measure of the trust they place in us.

Helping where we can
You might already have a clear picture of life in your new home. Or it might be a blank canvas. Either way, getting there is an exciting journey of discovery. And we're here to help.

From the first time you contact us, whether by phone, video call or a tour of a show home, we'll be listening carefully. Only you know what you want, but we'll be working with you to achieve it.

And we'll still be on hand, ready to help, long after you move in, quietly sharing your pride and satisfaction.

Pushing up standards
From beautiful locations and superb architectural design to meticulous construction work and exceptional finishes, our expertise is widely acknowledged. Our award-winning developments embrace state-of-the-art technologies and green thinking, but we never lose sight of the importance of craftsmanship. Every step is subject to rigorous Quality Assurance checks, and we reward our highly trained teams for safe and careful practice.

A smooth customer journey
Our award-winning service reflects the same high standards. As we guide you through your choices, decades of experience inform every step. So you can relax and enjoy the journey, knowing you have all the information you need.

With you every step of the way
After meeting your Development Sales Manager, who will help you choose and buy your new home, you'll be introduced to your Site Manager, who will be responsible for every aspect of the building work. They'll both be happy to answer any questions you have.

Fully involved
Your new home will quickly be moulded to your personal choices. So will our service. Once you tell us how you want to keep in touch, whether by phone, text, email, our custom designed app or via our website, that's how we'll keep you regularly updated and informed. You'll be able to access all the records of meetings, and see what happens next.

Make it your own
Even before you move in, there's the excitement of planning your interior. Choosing tiles and worktops, making decisions about appliances. We'll help wherever we can. Our Visualiser, for example, can help you make selections online then see them for real in the Sales Centre. Already, it's becoming your own, personal, space.

At a safe time during building, we'll invite you to visit your new home for a Progress Meeting where you can see the craftsmanship and attention to detail for yourself before it's covered up by fittings and finishes.

A place to grow
For us, the mark of success is seeing every home become unique, an individual reflection of the people who live there, and watching it become part of a thriving community.

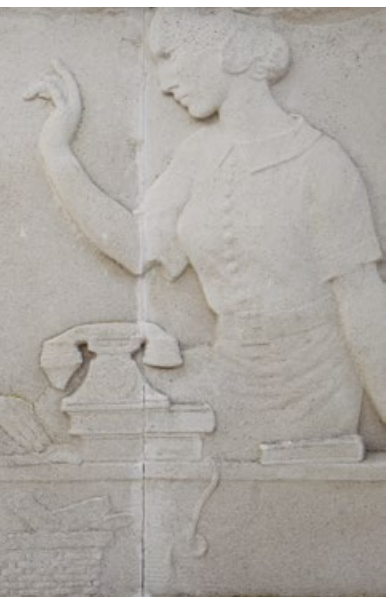
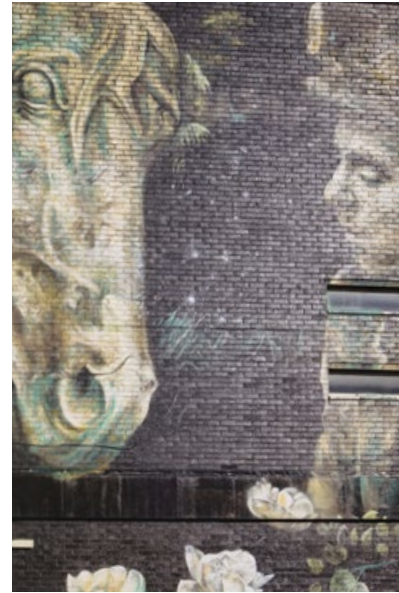
By creating sustainable homes, in sustainable communities, we're helping to build a sustainable future for everyone. Including ourselves.

your home
your way...



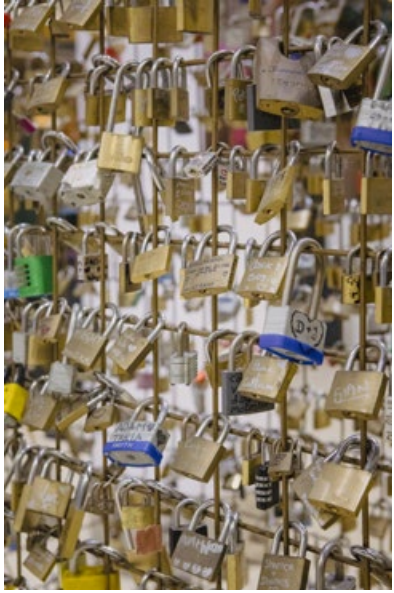
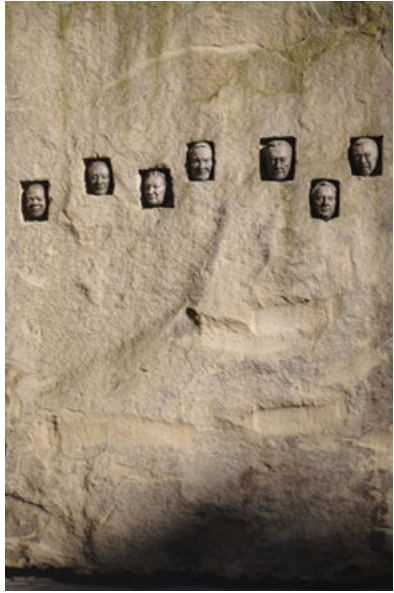
A nearby petrol station incorporates a Spar convenience store, open 24 hours a day, and an Asda Superstore, half a mile away, also opens round the clock on weekdays and incorporates a pharmacy. Doncaster city centre presents an eclectic variety of shopping environments. Around the High Street and Hallgate, traditional traders are complemented by bars, restaurants and cafés. The market place hosts regular fish markets, flea and street markets. In contrast, malls and retail centres like Lakeside Village, Waterdale and Frenchgate, with its 120 stores, international dining and leisure facilities, present a huge choice of high street fashion, technology and sports brands.

Saddlers Chase is close to superb leisure amenities. Adjacent to Doncaster Racecourse, it is around five minutes' walk from The Dome, which incorporates a water park with flumes, an ice rink, gym and fitness studios. Nearby, there is a tenpin bowling alley, an 11-screen Vue cinema and an Aircraft Museum. Behind the cinema, Lakeside park and garden features heritage and nature trails around a spectacular lake, while virtually next to the development the vast Cantley Park and Amthorpe Park offer endless opportunities for woodland walks. The Town Moor Golf Club sits within Doncaster Racecourse, and Wheatley Golf Club is just two and a half miles away.

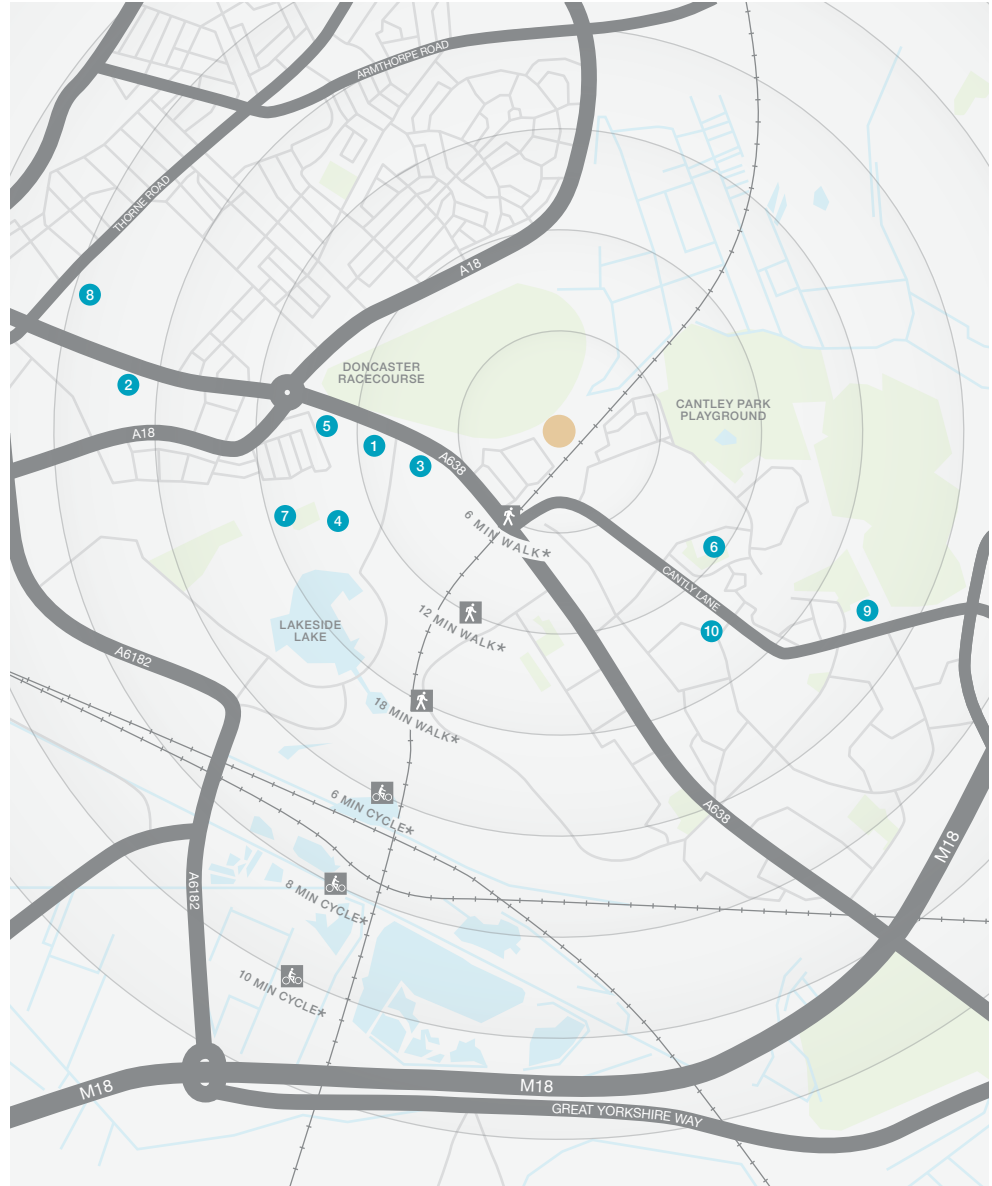


Doncaster's cultural and nightlife attractions range from live drama, music and dance at the exciting new Cast theatre, community shows at Doncaster Little Theatre and concerts at Doncaster Racecourse, to the Savoy Cinema with its six screens and five restaurants, and the many clubs and bars in the city centre. The city also has an excellent museum, art gallery and library.

Nearby schools include Hawthorn Primary and St Peter's Catholic Primary, both within around a mile, and Hall Cross Academy and The McAuley Catholic High School, both around two miles away. The Burns Medical Practice, a large, comprehensive health centre which also hosts an orthodontic clinic, is located around a mile from Saddlers Chase.

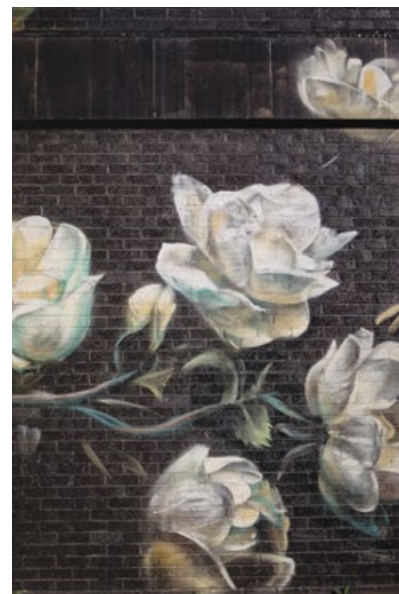
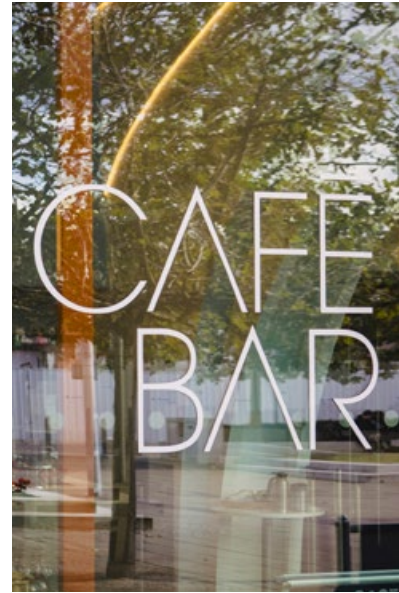


When you leave the car at home and explore the local area by foot or bicycle, you get to know it so much better. And by using local shops and services, you'll help to keep the neighbourhood vibrant and prosperous. Every place has its own personality, and once you move in you'll soon find your favourite walks, and the shops you like best. As a starting point this map shows some of the most useful features and services within a short stroll or bike ride.



- 1 Asda Pharmacy
Gliwice Way
01302 379 410
- 2 Bennethorpe Post Office
28 Bennethorpe
01302 340 639
- 3 The Dome Leisure Centre
Bawtry Road
01302 370 777
- 4 Vue Cinema
Doncaster Leisure Park
01345 308 4620
- 5 Town Moor Golf Club
Bawtry Road
01302 533 167
- 6 Hawthorn Primary School
Elham Road
01302 535 906
- 7 St Peter's Catholic Primary School
Sandy Lane
01302 369 143
- 8 Hall Cross Academy
Thorne Road
01302 320 626
- 9 The McAuley Catholic High School
Old Cantley
01302 537 396
- 10 Burns Medical Practice
Goodison Boulevard
01302 534 487

* Times stated are averages based on approximate distances and would be dependent on the route taken.
Based on:
0.5km = 5 to 7 mins walk
1.0km = 10 to 14 mins walk
1.5km = 15 to 21 mins walk
2.0km = 5 to 8 mins cycle
2.5km = 6 to 10 mins cycle
3.0km = 7 to 12 mins cycle



Contact Us

For development opening times please refer to millerhomes.co.uk or call 03330 606 688

From the M18
Leave the M18 at junction 3 to join the A6182 for Doncaster. One mile on, go straight ahead at the traffic lights then at the roundabout take the second exit and follow Lakeside Boulevard through two roundabouts. At the third roundabout take the third exit and follow Gliwice Way for half a mile. At the T-junction, turn right into Bawtry Road. Five hundred yards on, turn left into Rose Hill Rise. After 500 yards, Saddlers Chase is straight ahead.

From the M1
Leave the A1(M) at junction 36 to join the A630 for Doncaster. Follow the A630 for one and three quarter miles, then join the A18 for Bawtry. Stay on the A18 for one and a quarter miles, passing through one roundabout, then at Racecourse Roundabout take the third exit, into Bawtry Road. Half a mile on, turn left into Rose Hill Rise. After 500 yards, Saddlers Chase is straight ahead.

Sat Nav
DN4 5LE



Important Notice:
Although every care has been taken to ensure the accuracy of all the information given, the contents do not form part of any contract, or constitute a representation or warranty, and, as such, should be treated as a guide only. Interested parties should check with the Development Sales Manager and confirm all details with their solicitor. The developer reserves the right to amend the specification, as necessary, without prior notice, but to an equal or higher standard. Please note that items specified in literature and showhomes may depict appliances, fittings and decorative finishes that do not form part of the standard specification. The project is a new development which is currently under construction. Measurements provided have not been surveyed on-site. The measurements have been taken from architect's plans, and, as such, may be subject to variation during the course of construction. Not all the units described have been completed at the time of going to print and measurements and dimensions should be checked with the Development Sales Manager and confirmed with solicitors. The location of affordable housing is indicative and the tenure of homes may be subject to change.



Registered Developer

the place to be[®]

Why Miller Homes?

We've been building homes since 1934, that's three generations of experience. We've learned a lot about people and that's made a big difference to what we do and how we do it.

We're enormously proud of the homes we build, combining traditional craftsmanship with new ideas like low carbon technologies. The big difference is that we don't stop caring once we've finished the building, or when we've sold the house, or even once you've moved in. We're there when you need us, until you're settled, satisfied and inviting your friends round.



5 stars for customer satisfaction

Development Opening Times

Please see millerhomes.co.uk for development opening times or call 03330 606 688

Sat Nav: DN4 5LE

millerhomes.co.uk

millerhomes

the place to be®