



**The Choristers
Streethay**

millerhomes

the place to be®

- 04 Living in Streethay
- 08 Welcome Home
- 10 Plot Information
- 12 Floorplans
- 40 The Miller Difference
- 44 Useful Contacts
- 46 Contact Us

A new home. The start of a whole new chapter for you and your family. And for us, the part of our job where bricks and mortar becomes a place filled with activity and dreams and fun and love. We put a huge amount of care into the houses we build, but the story's not finished until we match them up with the right people. So, once you've chosen a Miller home, we'll do everything we can to make the rest of the process easy, even enjoyable. From the moment you make your decision until you've settled happily in, we'll be there to help.

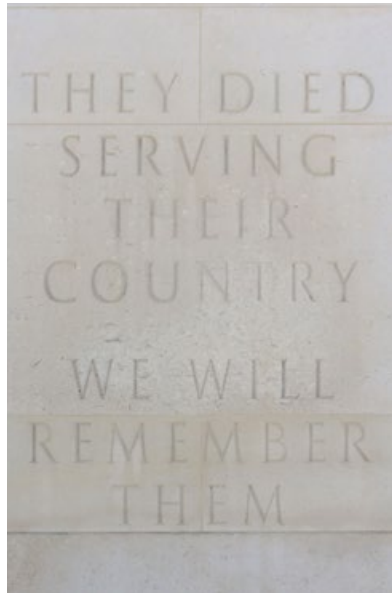
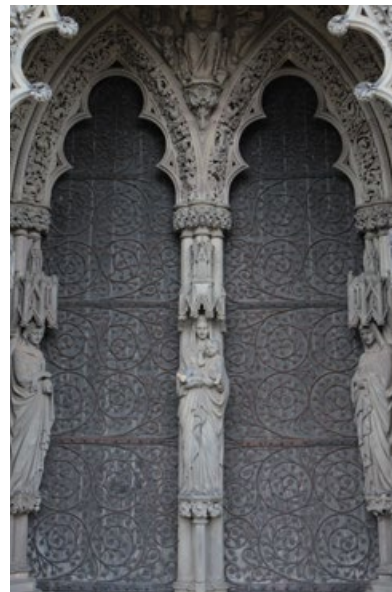


Quality of life is about the details of everyday living. From the little things, like knowing the nearest place to pick up a pint of milk, to more important matters like finding the right school or having a health centre nearby, you need to know that the community you're moving to will support you and your family, as well as being a pleasant place to live. So here's some useful information about the area around The Choristers.



Around a mile from the A38 and less than two miles from the centre of Lichfield, The Choristers is within approximately 35 minutes' drive of the centre of Birmingham. Buses between Burton and Lichfield stop 600 yards away, and trains from Lichfield Trent Valley Station, fifteen minutes' walk away, reach Birmingham New Street in approximately 45 minutes and London Euston in around one and a half hours. National Cycle Route 54, between Burton and Lichfield, passes less than a mile away and can be accessed via a quiet path.

For food and everyday essentials a nearby Co-op, open from 7am to 10pm six days a week, sits beside a café bar and two takeaways in Streethay Local Centre. There is a Post Office ten minutes' walk away via a railway bridge, beside Lichfield Retail Park which includes branches of Wickes, Halfords and Majestic Wine. A Lidl supermarket, Food Warehouse and B&M stores can be found few yards further on beside a Gym Unity, one of two 24-hour gyms near the retail park. Lichfield city centre is a picturesque shopping destination where traditional streets offer a mix of local independent retailers and national names, including pharmacies and supermarkets, interspersed with pubs, cafés and restaurants. Many major brand outlets are housed in the Three Spires Centre.



Welcome home

On the edge of the village of Streethay, a lively community half an hour's walk from the centre of Lichfield, this tree-lined neighbourhood of energy efficient two, three, four and five bedroom homes is close to shops and amenities, and has excellent road and rail connections. Alongside open countryside, and offering easy access to Birmingham and other destinations, it combines wide horizons and fresh air with an exceptionally convenient location. Welcome to The Choristers...

The artist's impressions (computer-generated graphics) have been prepared for illustrative purposes and are indicative only. They do not form part of any contract, or constitute a representation or warranty. External appearance may be subject to variation upon completion of the project.

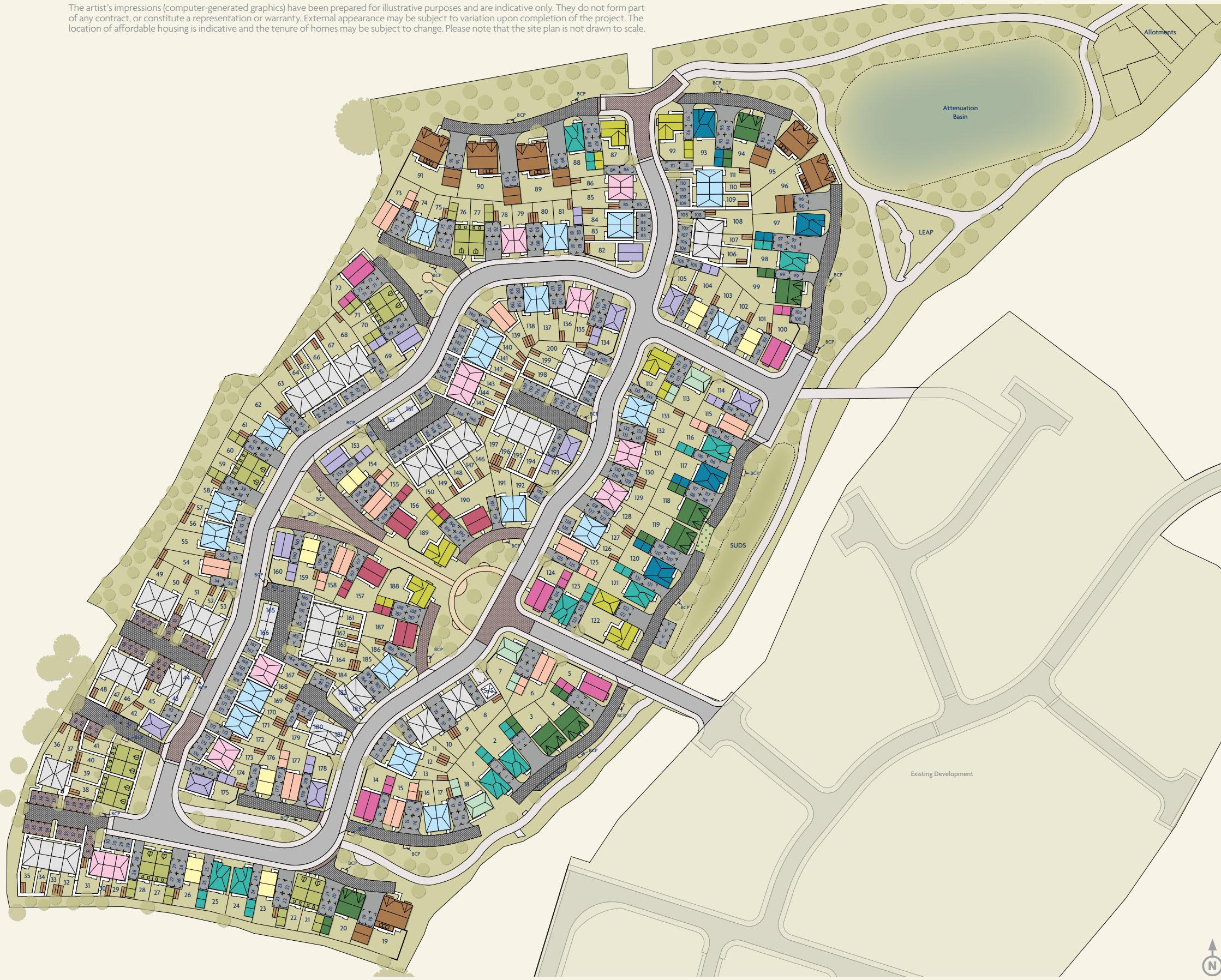


Plot Information

The artist's impressions (computer-generated graphics) have been prepared for illustrative purposes and are indicative only. They do not form part of any contract, or constitute a representation or warranty. External appearance may be subject to variation upon completion of the project. The location of affordable housing is indicative and the tenure of homes may be subject to change. Please note that the site plan is not drawn to scale.

- Highmont**
See Page 12
- Delmont**
See Page 14
- Whitton**
See Page 16
- Braxton**
See Page 18
- Clayton**
See Page 20
- Hampton**
See Page 22
- Middleton**
See Page 24
- Clarkston**
See Page 26
- Portwood**
See Page 28
- Fordwood**
See Page 30
- Beauwood**
See Page 32
- Brairwood**
See Page 34
- Crosswood**
See Page 36
- Kingford**
See Page 38
- Affordable Housing**

- Visitor Parking
- Bin Collection Point
- Local Equipped Area of Play
- Sustainable Urban Drainage System



Highmont

Overview
 French doors bring a bright focal point into the living and dining room, a welcoming, flexible space that shares the ground floor with a practical, ergonomic kitchen. The second bedroom features twin windows and a useful cupboard, and a downstairs WC complements the family bathroom.

| | |
|---|--|
| Ground Floor | First Floor |
| Living/Dining 4.03m x 4.72m 13'3" x 15'6" | Principal Bedroom 4.03m x 3.64m 13'3" x 11'11" |
| Kitchen 1.89m x 3.54m 6'2" x 11'7" | Bedroom 2 4.03m x 2.51m 13'3" x 8'3" |
| WC 0.90m x 2.10m 2'11" x 6'11" | Bathroom 1.70m x 2.00m 5'7" x 6'7" |

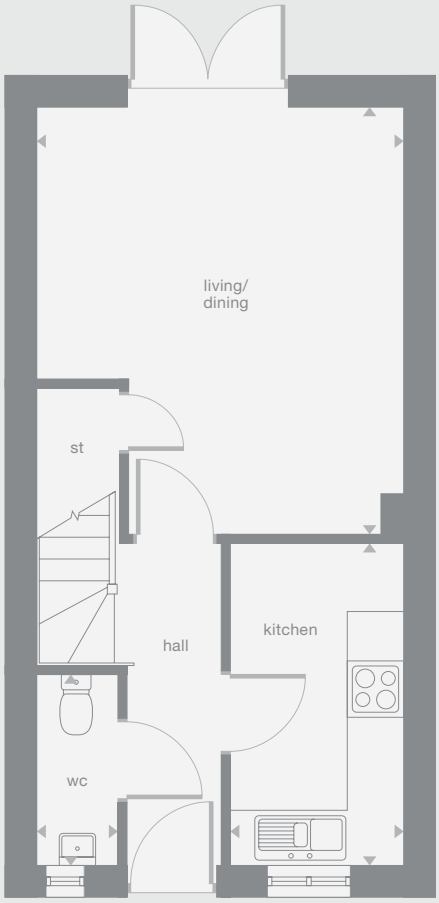
Floor Space
 725 sq ft

↑ Window not applicable to all plots. Please see Development Sales Manager for details.

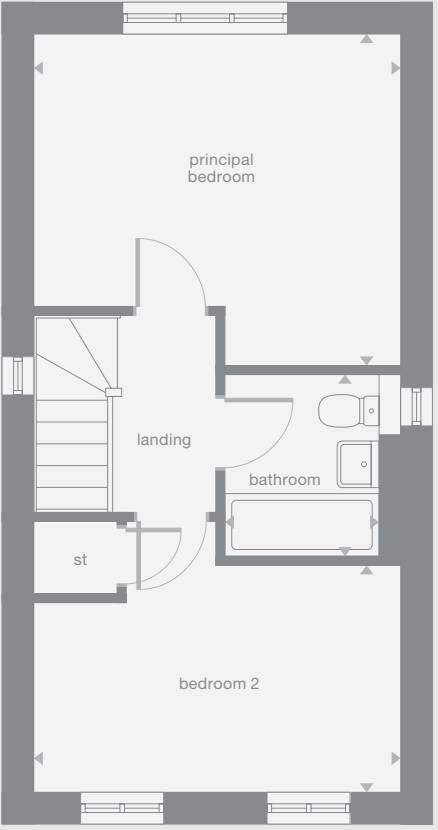
Plots may be a mirror image of the floor plans. Please see Development Sales Manager for details.



Ground Floor



First Floor



Photography/CGI represents typical Miller Homes' interiors and exteriors. Please note elevational treatments may vary. All plans in this brochure are not drawn to scale and are for illustrative purposes only. Consequently, they do not form part of any contract. Room layouts are provisional and may be subject to alteration. Please refer to the 'Important Notice' section at the back of this brochure for more information.

Delmont

Overview

The bright, beautifully planned kitchen and dining room is entered from the welcoming lounge of this comfortable and stylish home. There is a convenient downstairs WC, the principal bedroom includes an en-suite shower room, and bedroom two features dual windows and a built-in cupboard.

Ground Floor

Lounge
3.05m x 4.32m
10'0" x 14'2"

Kitchen/Dining
4.03m x 3.08m
13'3" x 10'1"

WC
1.50m x 1.14m
4'11" x 3'9"

First Floor

Principal Bedroom
4.03m x 3.71m
13'3" x 12'2"

En-Suite
1.08m x 2.30m
3'7" x 7'7"

Bedroom 2
4.03m x 2.67m
13'3" x 8'9"

Bathroom
1.86m x 2.15m
6'1" x 7'1"

Floor Space

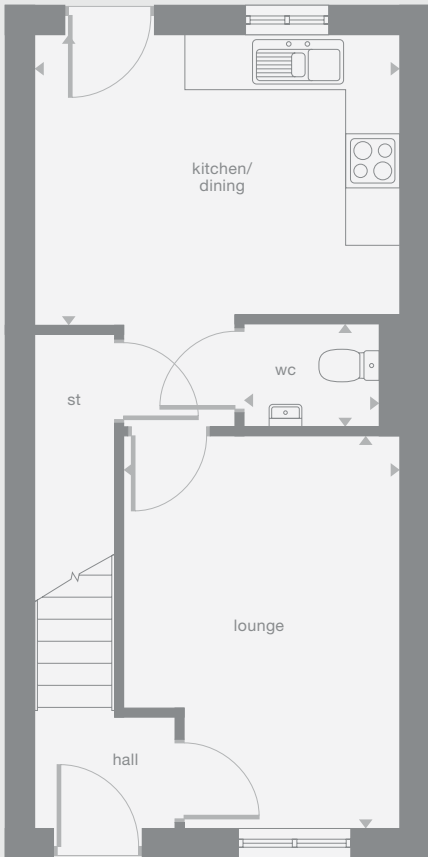
758 sq ft

† Window not applicable to all plots. Please see Development Sales Manager for details.

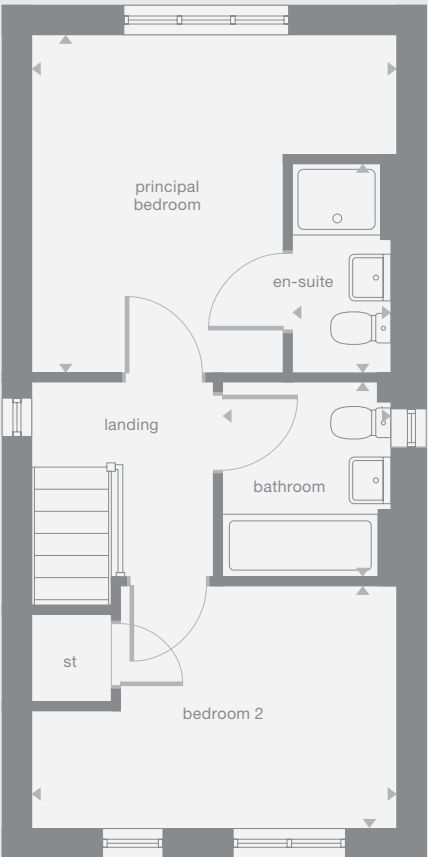
Plots may be a mirror image of the floor plans. Please see Development Sales Manager for details.



Ground Floor



First Floor



Photography/CGI represents typical Miller Homes' interiors and exteriors. Please note elevational treatments may vary. All plans in this brochure are not drawn to scale and are for illustrative purposes only. Consequently, they do not form part of any contract. Room layouts are provisional and may be subject to alteration. Please refer to the 'Important Notice' section at the back of this brochure for more information.

Overview

The bright lounge shares the ground floor with a downstairs WC and a bright kitchen where french doors add special appeal to the dining area. The family bathroom shares the first floor with three bedrooms, including a superb en-suite principal bedroom with a walk-in cupboard.

Ground Floor

Lounge
2.96m x 4.73m
9'9" x 15'6"

Kitchen
2.86m x 3.51m
9'5" x 11'6"

Dining
2.37m x 3.51m
7'9" x 11'6"

WC
1.03m x 1.63m
3'5" x 5'4"

First Floor

Principal Bedroom
3.21m x 3.69m
10'7" x 12'1"

En-Suite
1.92m x 1.95m
6'4" x 6'5"

Bedroom 2
2.98m x 2.46m
9'10" x 8'1"

Bedroom 3
2.15m x 3.51m
7'1" x 11'6"

Bathroom
1.70m x 2.04m
5'7" x 6'8"

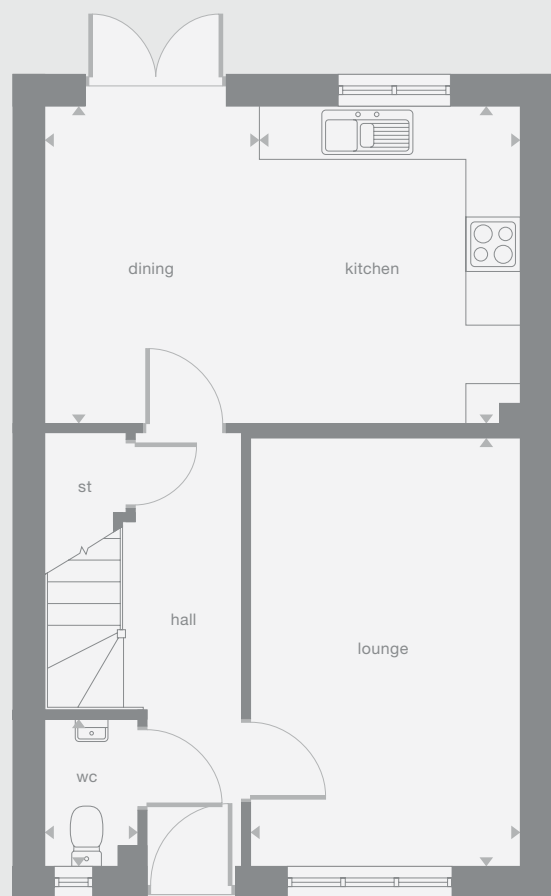
Floor Space

947 sq ft

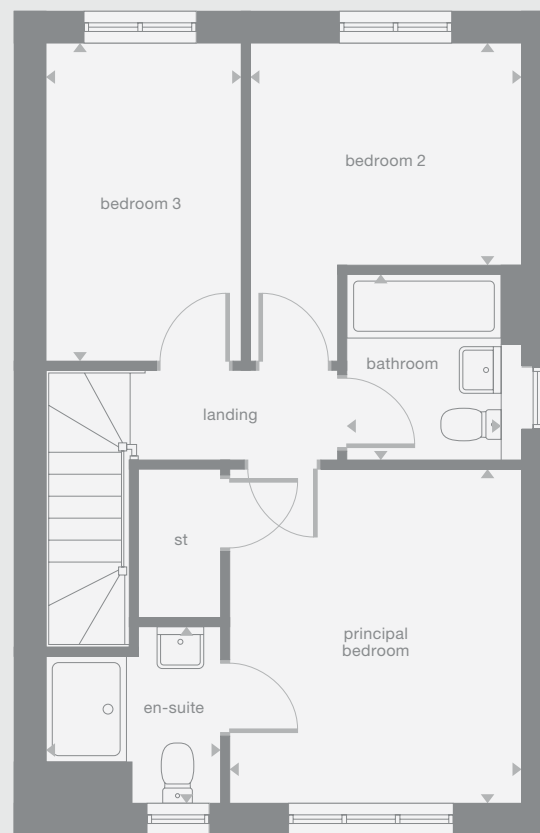
Plots may be a mirror image of the floor plans. Please see Development Sales Manager for details



Ground Floor



First Floor



Photography/CGI represents typical Miller Homes' interiors and exteriors. Please note elevational treatments may vary. All plans in this brochure are not drawn to scale and are for illustrative purposes only. Consequently, they do not form part of any contract. Room layouts are provisional and may be subject to alteration. Please refer to the 'Important Notice' section at the back of this brochure for more information.

Braxton

Overview

Both the lounge and the dining kitchen are dual aspect, with french doors enhancing the family space. Practical touches include a laundry room, downstairs WC and generous storage space. The bright landing leads to the bathroom and three bedrooms, including an en-suite, dual aspect principal bedroom.

Ground Floor

Lounge
2.99m x 5.58m
9'10" x 18'4"

Kitchen/Dining
2.90m x 2.65m
9'6" x 8'9"

Laundry
2.09m x 1.88m
6'10" x 6'2"

Family
2.90m x 2.92m
9'6" x 9'7"

WC
1.09m x 1.55m
3'7" x 5'1"

First Floor

Principal Bedroom
3.01m x 2.77m
9'11" x 9'1"

En-Suite
2.11m x 1.24m
6'11" x 4'1"

Bedroom 2
2.95m x 3.28m
9'8" x 10'9"

Bedroom 3
1.70m x 2.72m
10'6" x 8'11"

Bathroom
1.70m x 2.20m
5'7" x 7'3"

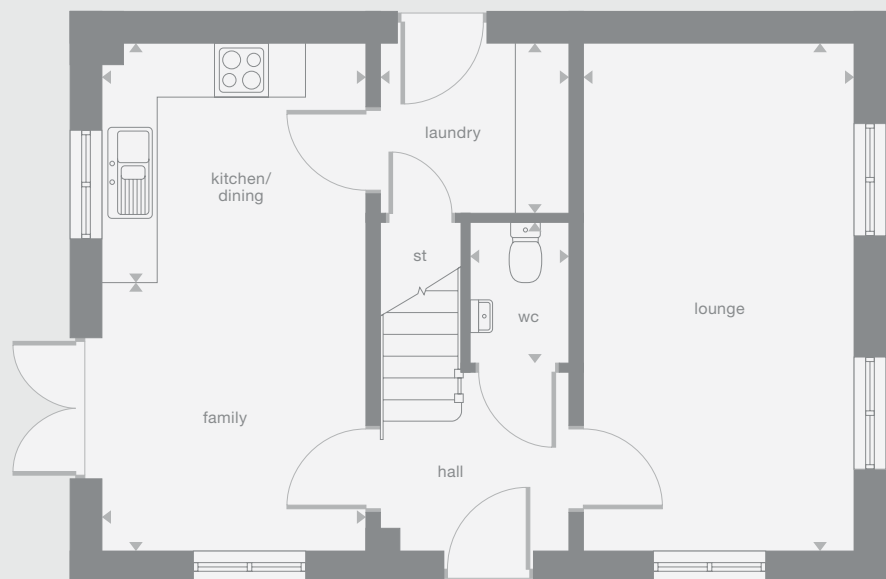
Floor Space

996 sq ft

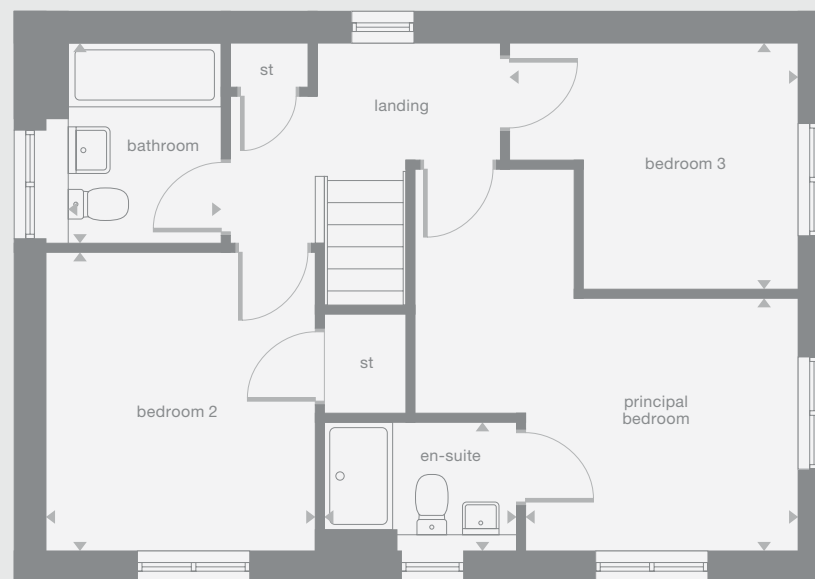
Plots may be a mirror image of the floor plans. Please see Development Sales Manager for details



Ground Floor



First Floor



Photography/CGI represents typical Miller Homes' interiors and exteriors. Please note elevational treatments may vary. All plans in this brochure are not drawn to scale and are for illustrative purposes only. Consequently, they do not form part of any contract. Room layouts are provisional and may be subject to alteration. Please refer to the 'Important Notice' section at the back of this brochure for more information.

Clayton

Overview

The striking lounge, extending from a front-facing window to french doors, complements a dual-aspect kitchen and dining room that forms an adaptable social space. There is a laundry room and a downstairs WC, and the first floor includes the family bathroom and three bedrooms, one of them en-suite.

Ground Floor

Lounge
2.87m x 5.91m
9'5" x 19'5"

Kitchen
2.85m x 3.06m
9'4" x 10'1"

Laundry
2.02m x 1.69m
6'8" x 5'7"

Dining
2.85m x 2.85m
9'4" x 9'4"

WC
1.07m x 1.74m
3'6" x 5'9"

First Floor

Principal Bedroom
2.95m x 3.18m
9'8" x 10'5"

En-Suite
1.93m x 1.71m
6'4" x 5'7"

Bedroom 2
2.91m x 3.82m
9'7" x 12'7"

Bedroom 3
2.95m x 2.64m
9'8" x 8'8"

Bathroom
1.70m x 1.99m
5'7" x 6'7"

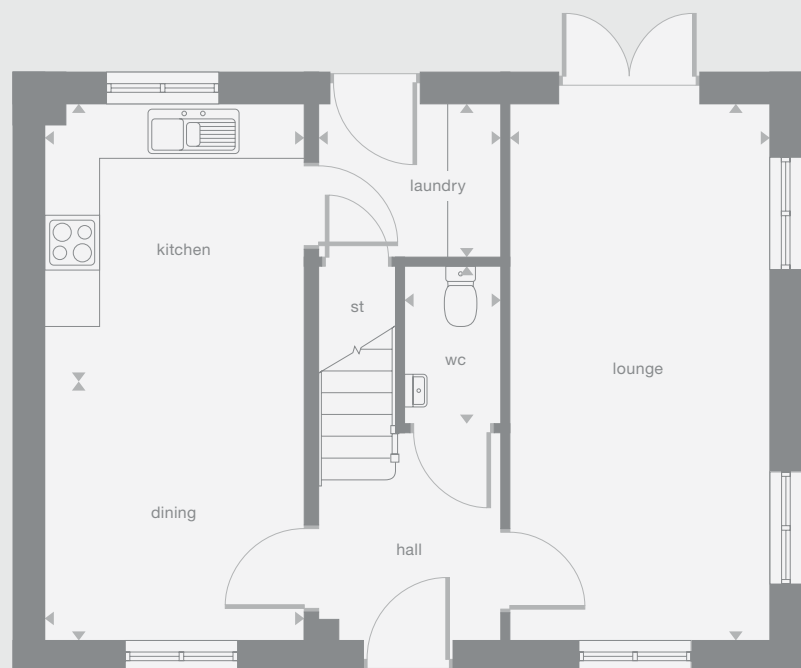
Floor Space

1,018 sq ft

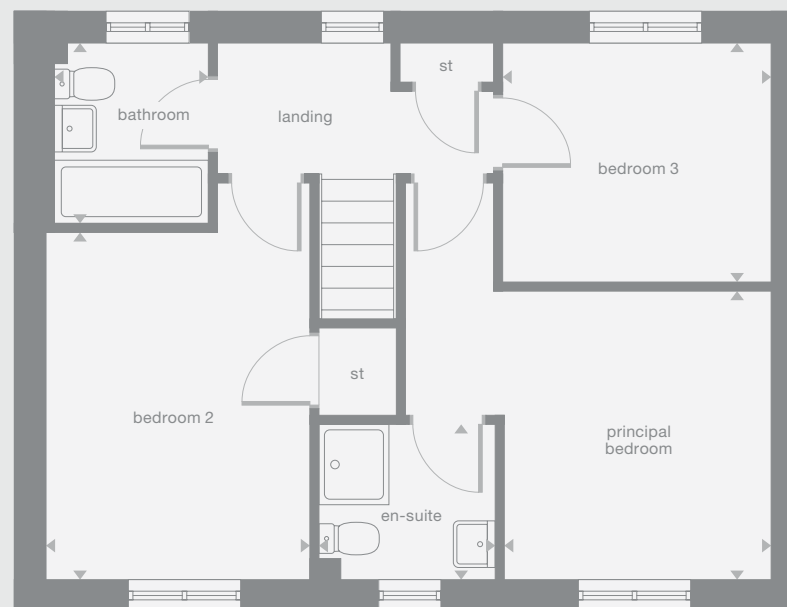
Plots may be a mirror image of the floor plans. Please see Development Sales Manager for details



Ground Floor



First Floor



Photography/CGI represents typical Miller Homes' interiors and exteriors. Please note elevational treatments may vary. All plans in this brochure are not drawn to scale and are for illustrative purposes only. Consequently, they do not form part of any contract. Room layouts are provisional and may be subject to alteration. Please refer to the 'Important Notice' section at the back of this brochure for more information.

Hampton

Overview

The superb kitchen, with its dining area opening to the garden and the light, elegant lounge form a flexible backdrop to everyday life. The family bathroom shares the first floor with three bedrooms, and the en-suite principal bedroom features a dressing room.

Ground Floor

Lounge
3.42m x 3.57m
11'3" x 11'9"

Kitchen
3.43m x 3.06m
11'3" x 10'3"

Family/Dining
5.47m x 2.38m
17'11" x 7'10"

WC
1.95m x 1.47m
6'5" x 4'10"

First Floor

Principal Bedroom
3.30m x 3.14m
10'10" x 10'4"

En-Suite
2.18m x 1.87m
7'2" x 6'2"

Dressing
2.07m x 1.68m
6'10" x 5'6"

Bedroom 2
2.81m x 3.85m
9'3" x 12'8"

Bedroom 3
2.56m x 3.65m
8'5" x 12'0"

Bathroom
1.98m x 2.21m
6'6" x 7'3"

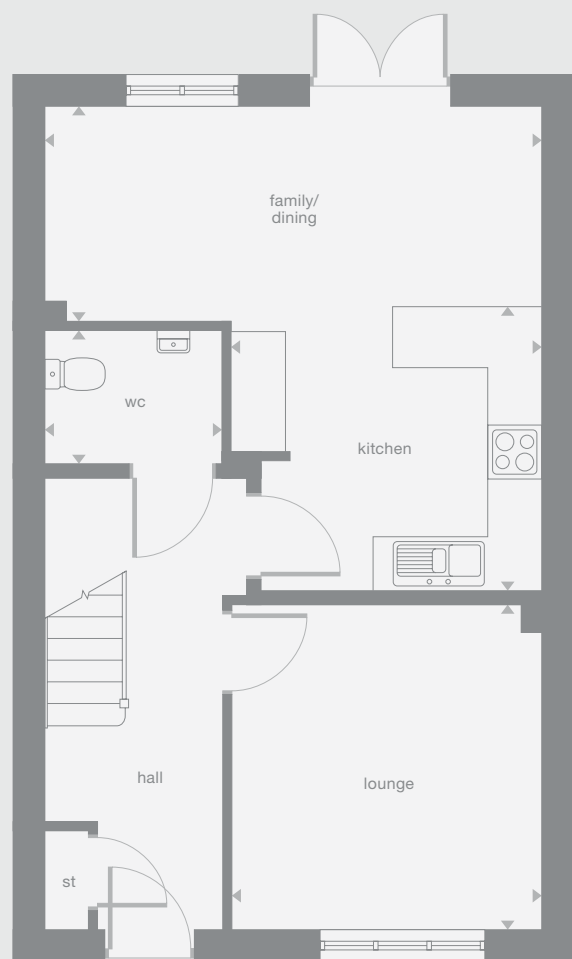
Floor Space

1,069 sq ft

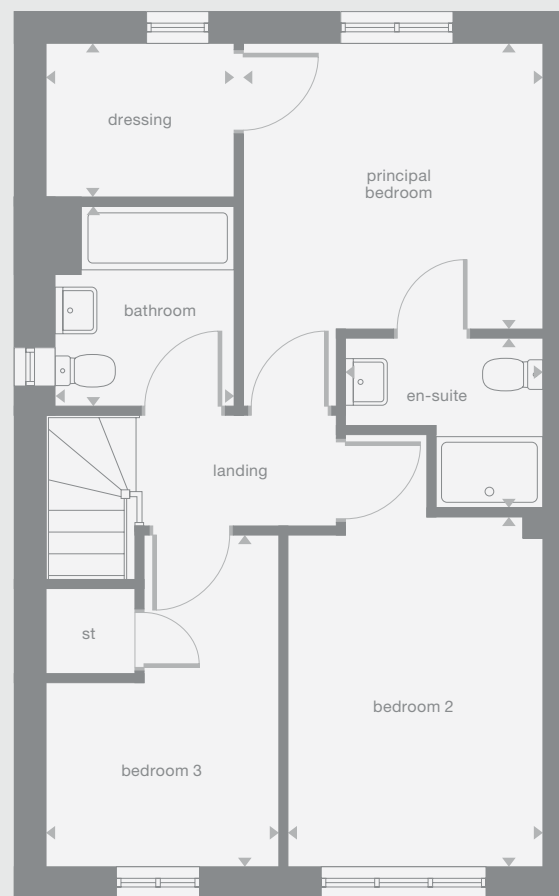
Plots may be a mirror image of the floor plans. Please see Development Sales Manager for details



Ground Floor



First Floor



Photography/CGI represents typical Miller Homes' interiors and exteriors. Please note elevational treatments may vary. All plans in this brochure are not drawn to scale and are for illustrative purposes only. Consequently, they do not form part of any contract. Room layouts are provisional and may be subject to alteration. Please refer to the 'Important Notice' section at the back of this brochure for more information.

Middleton

Overview

In addition to a kitchen featuring french doors in the dining area, a natural hub for family life, the ground floor includes a bright lounge, a downstairs WC and a walk-in cupboard for coats or sports equipment. Upstairs, one of the three bedrooms is en-suite.

Ground Floor

Lounge
3.00m x 4.37m
9'10" x 14'4"

Kitchen
2.74m x 4.09m
9'0" x 13'5"

Family/Dining
3.29m x 4.09m
10'10" x 13'5"

WC
1.45m x 2.00m
4'9" x 6'7"

First Floor

Principal Bedroom
3.47m x 3.14m
11'5" x 10'4"

En-Suite
2.47m x 1.06m
8'1" x 3'6"

Bedroom 2
2.83m x 4.08m
9'3" x 13'5"

Bedroom 3
3.11m x 3.53m
10'3" x 11'7"

Bathroom
1.83m x 2.15m
6'0" x 7'1"

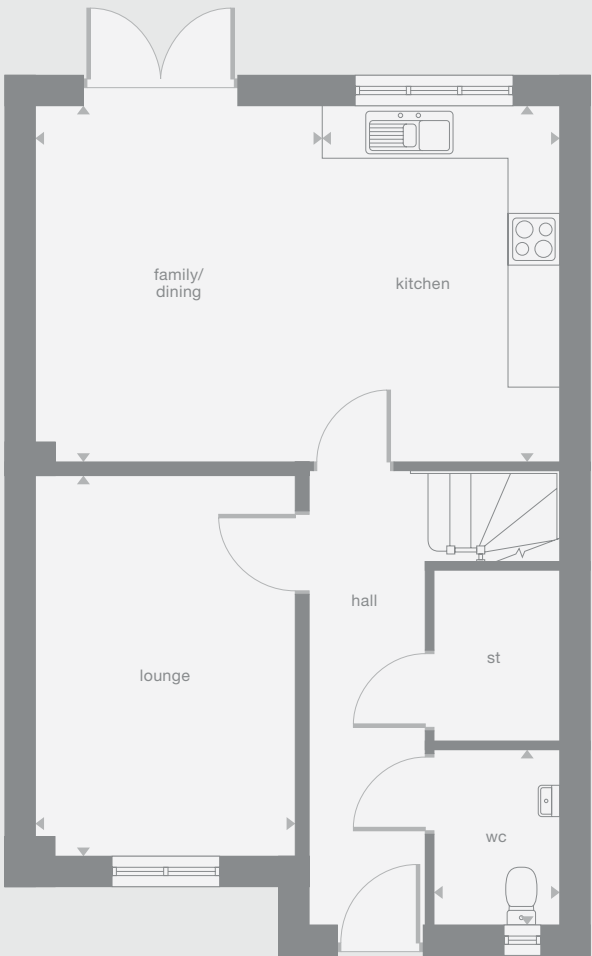
Floor Space

1,169 sq ft

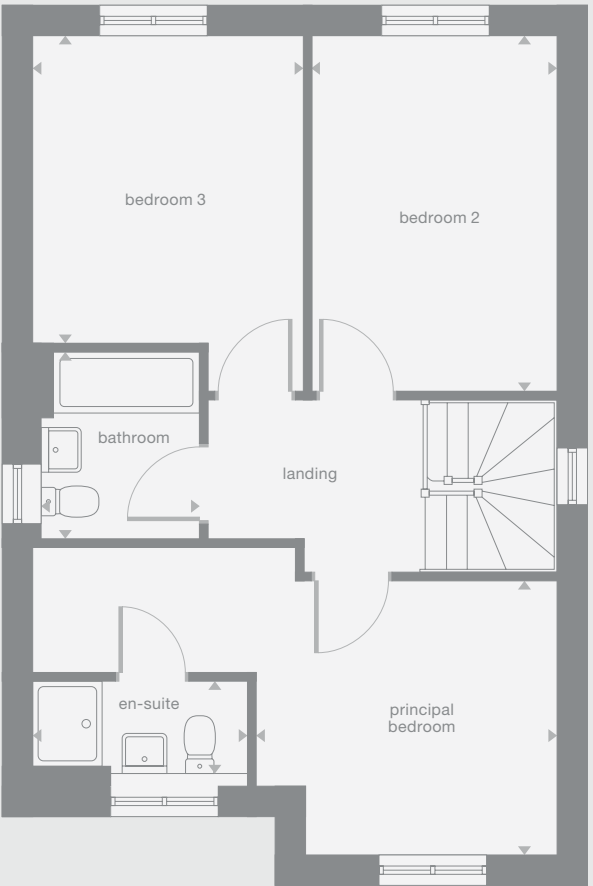
Plots may be a mirror image of the floor plans. Please see Development Sales Manager for details



Ground Floor



First Floor



Photography/CGI represents typical Miller Homes' interiors and exteriors. Please note elevational treatments may vary. All plans in this brochure are not drawn to scale and are for illustrative purposes only. Consequently, they do not form part of any contract. Room layouts are provisional and may be subject to alteration. Please refer to the 'Important Notice' section at the back of this brochure for more information.

Clarkston

Overview

The kitchen and dining room includes a superb, light filled family area with french doors and rooflights, complementing a comfortable lounge and a downstairs WC. Two of the three bedrooms and the bathroom share the first floor, and the en-suite principal bedroom includes a charming dormer window.

Ground Floor

Lounge
2.63m x 4.70m
8'8" x 15'5"

Kitchen
2.73m x 3.66m
9'0" x 12'0"

Family
4.82m x 1.80m
15'5" x 5'11"

Dining
2.08m x 3.00m
6'6" x 9'10"

WC
0.90m x 2.29m
2'11" x 7'6"

First Floor

Bedroom 2
4.82m x 3.02m
15'10" x 9'11"

Bedroom 3
4.82m x 3.16m
15'10" x 10'4"

Bathroom
2.48m x 2.10m
8'2" x 6'11"

Second Floor

Principal Bedroom
4.82m x 4.73m
15'10" x 15'6"

En-Suite
1.41m x 2.44m
4'8" x 8'0"

Floor Space

1,271 sq ft

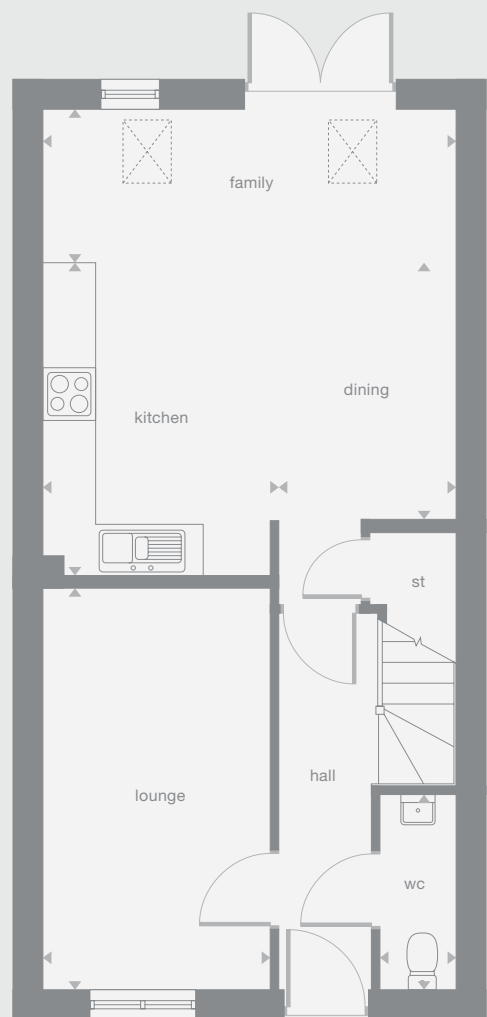
Denotes full height ceiling line

Denotes 1,500m height ceiling line

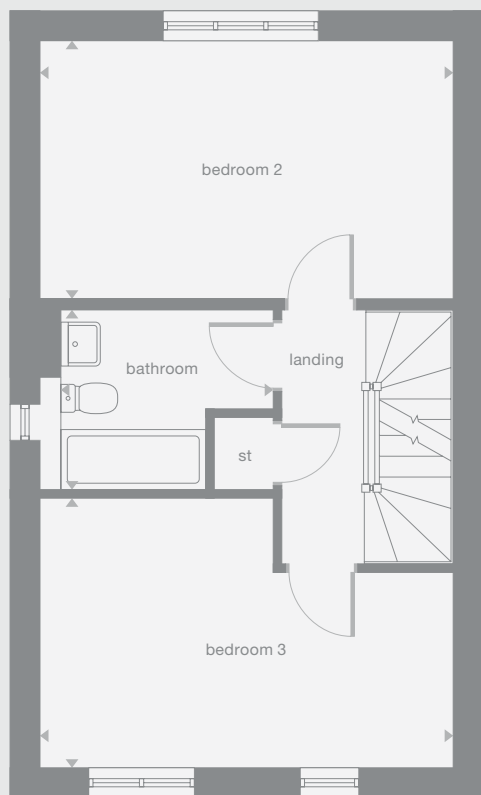
Plots may be a mirror image of the floor plans. Please see Development Sales Manager for details



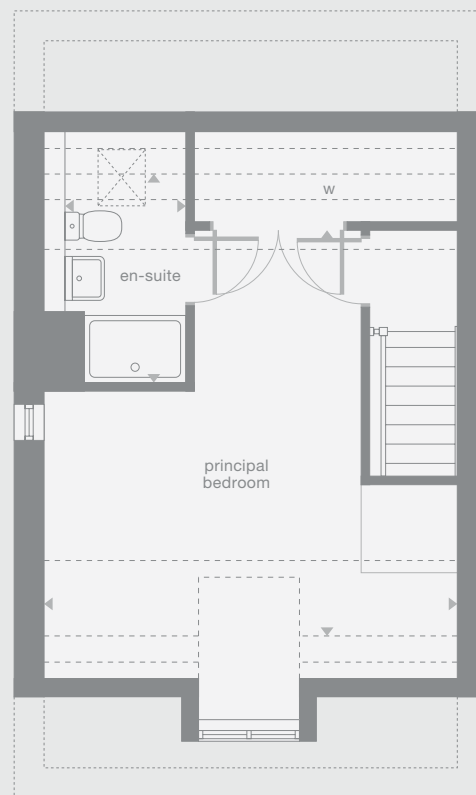
Ground Floor



First Floor



Second Floor



Photography/CGI represents typical Miller Homes' interiors and exteriors. Please note elevational treatments may vary. All plans in this brochure are not drawn to scale and are for illustrative purposes only. Consequently, they do not form part of any contract. Room layouts are provisional and may be subject to alteration. Please refer to the 'Important Notice' section at the back of this brochure for more information.

Portwood

Overview

The magnificent dual aspect, L-shaped family room extends into a light-filled dining area opening to the garden, and a stylish, ergonomic galley kitchen with a separate laundry. The bathroom has a separate shower, and the four bedrooms include an en-suite principal bedroom with dressing room.

Ground Floor

Lounge
2.93m x 4.08m
9'7" x 13'5"

Kitchen
3.45m x 2.70m
11'4" x 8'10"

Laundry
1.91m x 1.71m
6'4" x 5'7"

Dining
3.03m x 4.16m
9'11" x 13'8"

Family
3.03m x 2.76m
9'11" x 9'1"

WC
1.91m x 0.90m
6'4" x 2'11"

First Floor

Principal Bedroom
3.14m x 2.75m
10'4" x 9'0"

En-Suite
1.97m x 1.55m
6'6" x 5'1"

Dressing
1.85m x 1.97m
6'1" x 6'6"

Bedroom 2
2.93m x 3.81m
9'7" x 12'6"

Bedroom 3
3.72m x 2.44m
12'3" x 8'0"

Bedroom 4/Study
2.15m x 3.02m
7'1" x 9'11"

Bathroom
2.05m x 1.69m
6'9" x 5'7"

Floor Space

1,212 sq ft

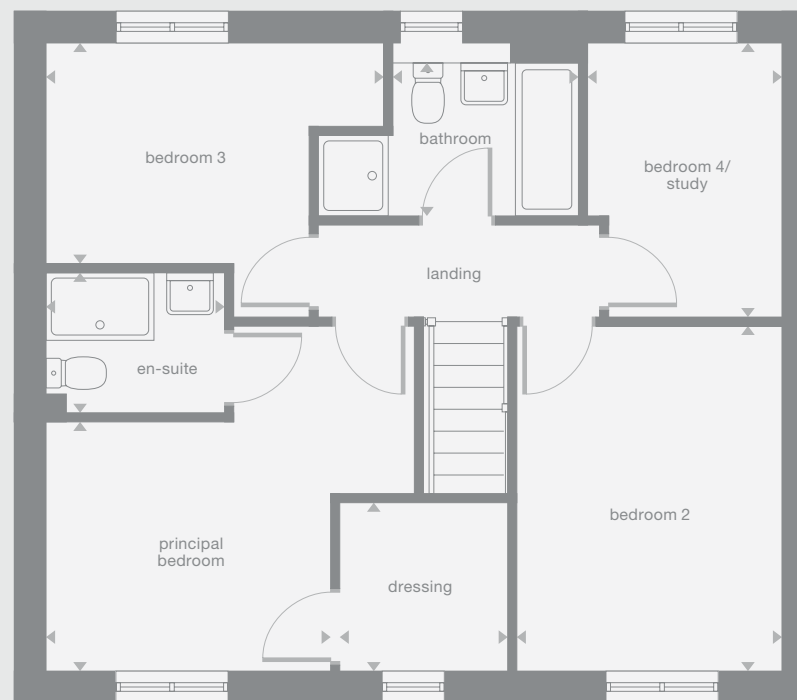
Plots may be a mirror image of the floor plans. Please see Development Sales Manager for details



Ground Floor



First Floor



Photography/CGI represents typical Miller Homes' interiors and exteriors. Please note elevational treatments may vary. All plans in this brochure are not drawn to scale and are for illustrative purposes only. Consequently, they do not form part of any contract. Room layouts are provisional and may be subject to alteration. Please refer to the 'Important Notice' section at the back of this brochure for more information.

Fordwood

Overview

The bay windowed family room adjoins a dining kitchen with french doors, creating a breathtaking triple aspect space. French doors enhance the dual aspect lounge, there is a laundry room, a downstairs WC and an upstairs study. One bedroom has an en-suite and another is dual aspect.

Ground Floor

Lounge
3.23m x 5.20m
10'7" x 17'1"

Kitchen/Dining
4.57m x 3.16m
15'0" x 10'4"

Laundry
2.08m x 1.82m
6'10" x 6'0"

Family
3.32m x 5.20m
10'11" x 17'1"

WC
1.09m x 1.50m
3'7" x 4'11"

First Floor

Principal Bedroom
4.57m x 3.01m
15'0" x 9'11"

En-Suite
1.45m x 1.23m
4'9" x 4'1"

Bedroom 2
4.54m x 2.52m
14'11" x 8'3"

Bedroom 3
3.63m x 3.07m
11'11" x 10'1"

Study/Bedroom 4
2.25m x 2.03m
7'5" x 6'8"

Bathroom
2.52m x 1.89m
9'1" x 6'3"

Floor Space

1,267 sq ft

Plots may be a mirror image of the floor plans. Please see Development Sales Manager for details



Ground Floor



First Floor



Photography/CGI represents typical Miller Homes' interiors and exteriors. Please note elevational treatments may vary. All plans in this brochure are not drawn to scale and are for illustrative purposes only. Consequently, they do not form part of any contract. Room layouts are provisional and may be subject to alteration. Please refer to the 'Important Notice' section at the back of this brochure for more information.

Beauwood

Overview

From the bay-windowed lounge to the en-suite bedroom, this is a superb, feature-filled home. The kitchen, the study/family room and two of the four bedrooms are all dual aspect. The french doors enhance the open-plan kitchen, the family bathroom includes a separate shower.

Ground Floor

- Lounge**
4.10m x 4.09m
13'5" x 13'5"
- Kitchen**
3.48m x 3.96m
11'5" x 13'0"
- Laundry**
2.12m x 1.76m
7'0" x 5'9"
- Dining**
3.48m x 2.83m
11'5" x 9'4"
- Study/Family**
3.42m x 2.61m
11'3" x 8'7"
- WC**
1.07m x 1.55m
3'6" x 5'1"

First Floor

- Principal Bedroom**
3.53m x 3.41m
11'7" x 11'2"
- En-Suite**
2.04m x 1.79m
6'8" x 5'9"
- Bedroom 2**
3.48m x 3.30m
11'5" x 10'10"
- Bedroom 3**
2.42m x 3.39m
8'0" x 11'2"
- Bedroom 4**
3.56m x 3.28m
11'8" x 10'9"
- Bathroom**
3.14m x 1.70m
10'4" x 5'7"

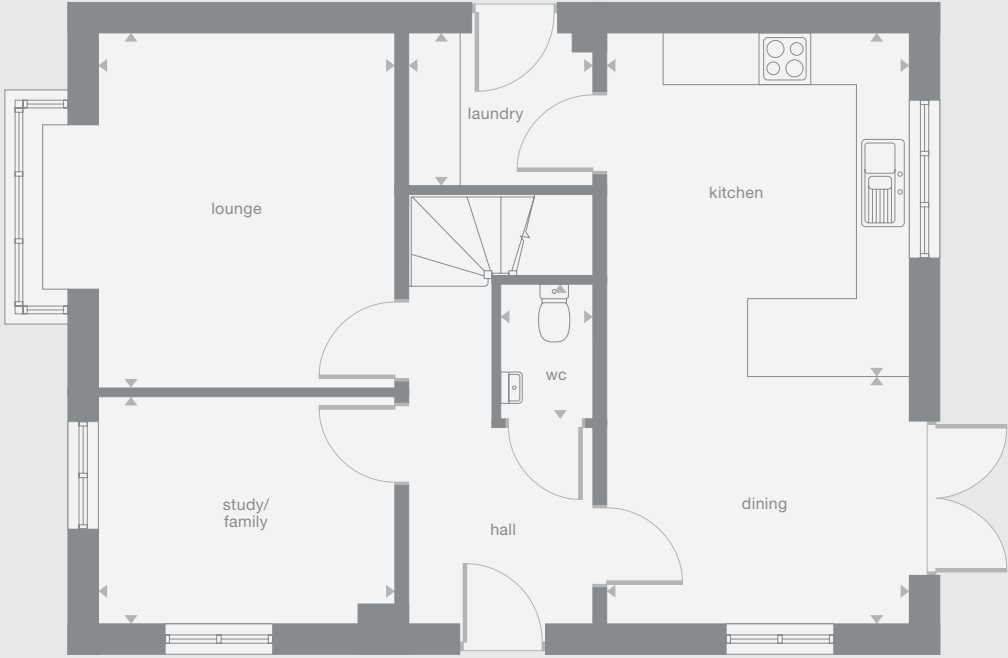
Floor Space

1,379 sq ft

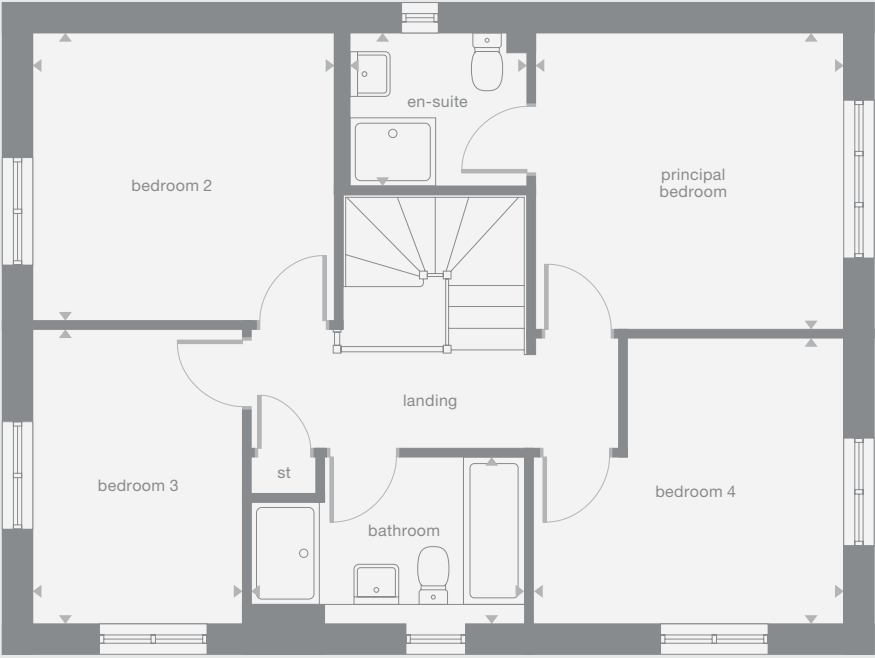
Plots may be a mirror image of the floor plans. Please see Development Sales Manager for details



Ground Floor



First Floor



Photography/CGI represents typical Miller Homes' interiors and exteriors. Please note elevational treatments may vary. All plans in this brochure are not drawn to scale and are for illustrative purposes only. Consequently, they do not form part of any contract. Room layouts are provisional and may be subject to alteration. Please refer to the 'Important Notice' section at the back of this brochure for more information.

Briarwood

Overview

With its stylish lounge and airy, open plan kitchen and dining room, this superb home is perfect for lively gatherings. There is a separate laundry room and a dedicated study, and the bright gallery landing opens on to the bathroom and four bedrooms, one of them en-suite.

Ground Floor

- Lounge**
3.56m x 4.47m
11'8" x 14'8"
- Kitchen**
3.36m x 2.99m
11'0" x 9'10"
- Laundry**
2.08m x 1.80m
6'10" x 5'11"
- Family/Dining**
3.91m x 3.84m
12'10" x 12'7"
- Study**
2.08m x 1.97m
6'10" x 6'6"
- WC**
2.08m x 1.52m
6'10" x 5'0"

First Floor

- Principal Bedroom**
3.56m x 3.13m
11'8" x 10'3"
- En-Suite**
2.16m x 1.30m
7'1" x 4'3"
- Bedroom 2**
3.62m x 3.51m
11'11" x 11'6"
- Bedroom 3**
4.19m x 2.75m
13'9" x 9'0"
- Bedroom 4**
2.80m x 2.73m
9'10" x 9'0"
- Bathroom**
2.38m x 2.16m
7'10" x 7'1"

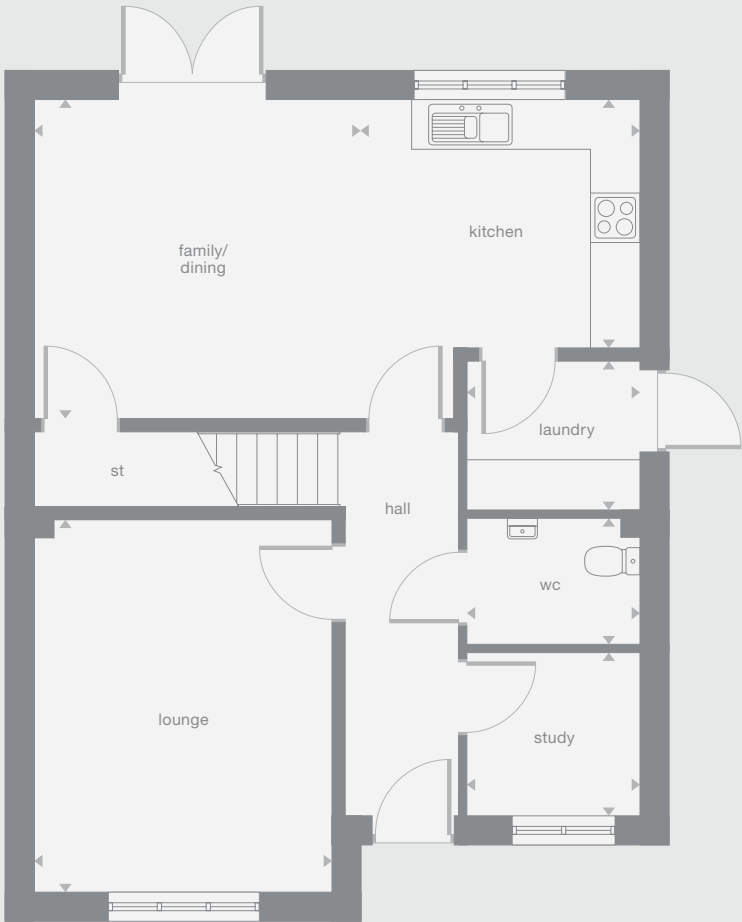
Floor Space

1,419 sq ft

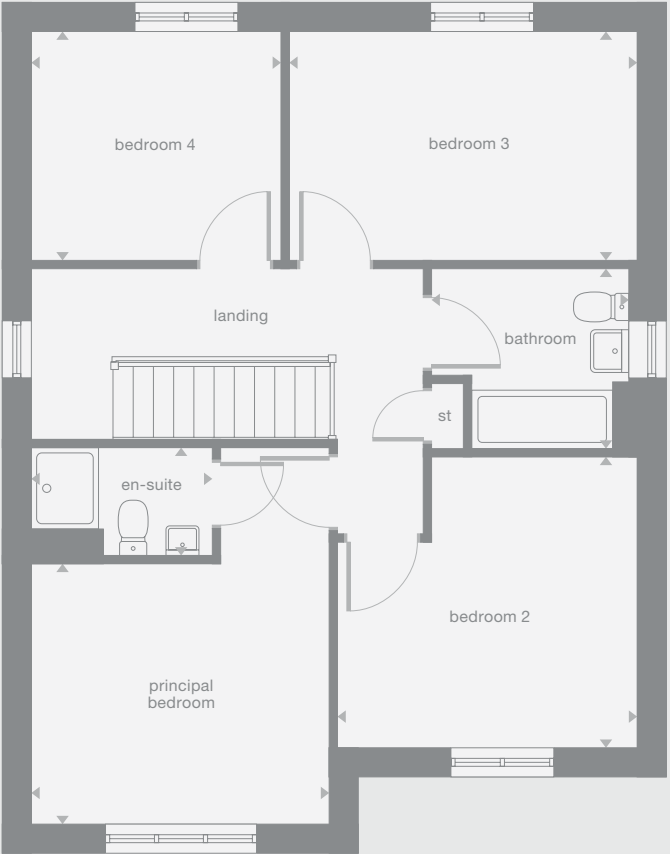
Plots may be a mirror image of the floor plans. Please see Development Sales Manager for details



Ground Floor



First Floor



Photography/CGI represents typical Miller Homes' interiors and exteriors. Please note elevational treatments may vary. All plans in this brochure are not drawn to scale and are for illustrative purposes only. Consequently, they do not form part of any contract. Room layouts are provisional and may be subject to alteration. Please refer to the 'Important Notice' section at the back of this brochure for more information.

Crosswood

Overview

Perfect for social events, the lounge and dining room complement a broad family kitchen that opens out to the garden. The family bathroom features a separate shower, and the four bedrooms, two of them en-suite and one with a dressing room, ensure that privacy is always available.

Ground Floor

Lounge
3.12m x 5.15m
10'3" x 16'11"

Kitchen
3.02m x 3.47m
9'11" x 11'5"

Laundry
1.76m x 1.88m
5'9" x 6'2"

Family/Breakfast
5.03m x 3.47m
16'6" x 11'5"

Dining
2.77m x 3.18m
9'1" x 10'5"

WC
0.92m x 1.88m
3'0" x 6'2"

First

Principal Bedroom
2.91m x 3.79m
9'7" x 12'5"

En-Suite 1
1.55m x 2.02m
5'1" x 6'8"

Dressing
2.61m x 1.70m
8'7" x 5'7"

Bedroom 2
3.16m x 3.47m
10'5" x 11'5"

En-Suite 2
2.13m x 1.60m
7'0" x 5'3"

Bedroom 3
2.38m x 3.28m
7'10" x 10'9"

Bedroom 4
2.61m x 3.09m
8'7" x 10'2"

Bathroom
2.86m x 1.70m
9'5" x 5'7"

Floor Space

1,500 sq ft

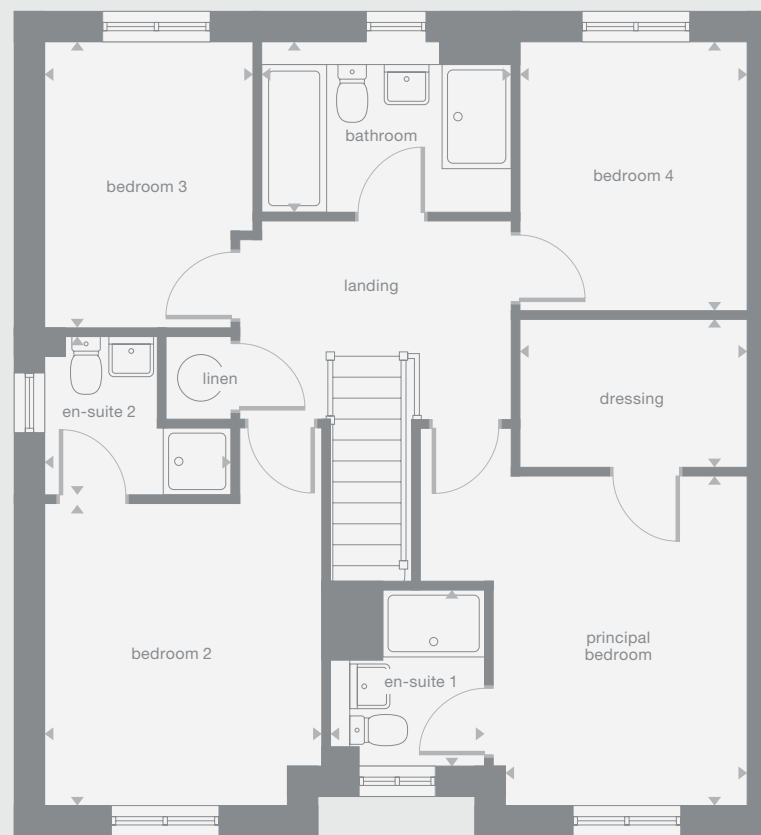
Plots may be a mirror image of the floor plans. Please see Development Sales Manager for details.



Ground Floor



First Floor



Photography/CGI represents typical Miller Homes' interiors and exteriors. Please note elevational treatments may vary. All plans in this brochure are not drawn to scale and are for illustrative purposes only. Consequently, they do not form part of any contract. Room layouts are provisional and may be subject to alteration. Please refer to the 'Important Notice' section at the back of this brochure for more information.

Overview

Accessed from a superb entrance hall, both the study and the lounge feature bay windows and the island kitchen, incorporating bi-fold doors and rooflights, adjoins a dining room with french doors. The five bedrooms include two en-suites, and the family bathroom has a separate shower.

Ground Floor

- Lounge
3.83m x 5.84m
12'7" x 19'2"
- Kitchen
6.38m x 6.04m
20'11" x 19'10"
- Laundry
2.25m x 1.72m
7'5" x 5'8"
- Dining
3.73m x 3.49m
12'3" x 11'6"
- Study/Family
3.34m x 3.46m
11'0" x 11'5"
- WC
0.99m x 1.72m
3'3" x 5'8"

First

- Principal Bedroom
3.27m x 4.52m
10'9" x 14'10"
- En-Suite 1
2.46m x 1.54m
8'1" x 5'1"
- Dressing
2.46m x 2.55m
8'1" x 8'4"
- Bedroom 2
3.85m x 2.58m
12'8" x 8'6"
- En-Suite 2
2.53m x 1.43m
8'4" x 4'9"
- Bedroom 3
3.84m x 3.07m
12'7" x 10'1"
- Bedroom 4
3.81m x 2.49m
12'6" x 8'2"
- Bedroom 5
3.06m x 2.29m
10'1" x 7'7"
- Bathroom
2.53m x 2.01m
8'4" x 6'7"

Floor Space

2,088 sq ft

Plots may be a mirror image of the floor plans. Please see Development Sales Manager for details



Ground Floor



First Floor



Photography/CGI represents typical Miller Homes' interiors and exteriors. Please note elevational treatments may vary. All plans in this brochure are not drawn to scale and are for illustrative purposes only. Consequently, they do not form part of any contract. Room layouts are provisional and may be subject to alteration. Please refer to the 'Important Notice' section at the back of this brochure for more information.

The Miller Difference

The Miller Difference
Every home we build is the start of an adventure. For more than 90 years we've watched people stamp their individual personalities on the homes we build. What we create is your starting point. Our job is to make sure it's the best one possible.

Shaped around you
For more than three generations, we've been listening to our customers. We know what you expect: the highest quality materials, the most skilled workmanship, ready to be shaped around your lifestyle.

Built on trust
Figures and statistics matter. We have, for example, a five star rating for Customer Satisfaction, the best possible, from the Home Builders Federation.

Even more important, though, is the feedback we get from our customers. After we've been with them on the journey from their first enquiry to settling into their new home, well over 90% say they would recommend us. That's the real measure of the trust they place in us.

Helping where we can
You might already have a clear picture of life in your new home. Or it might be a blank canvas. Either way, getting there is an exciting journey of discovery. And we're here to help.

From the first time you contact us, whether by phone, video call or a tour of a show home, we'll be listening carefully. Only you know what you want, but we'll be working with you to achieve it.

And we'll still be on hand, ready to help, long after you move in, quietly sharing your pride and satisfaction.

Pushing up standards
From beautiful locations and superb architectural design to meticulous construction work and exceptional finishes, our expertise is widely acknowledged. Our award-winning developments embrace state-of-the-art technologies and green thinking, but we never lose sight of the importance of craftsmanship. Every step is subject to rigorous Quality Assurance checks, and we reward our highly trained teams for safe and careful practice.

A smooth customer journey
Our award-winning service reflects the same high standards. As we guide you through your choices, decades of experience inform every step. So you can relax and enjoy the journey, knowing you have all the information you need.

With you every step of the way
After meeting your Development Sales Manager, who will help you choose and buy your new home, you'll be introduced to your Site Manager, who will be responsible for every aspect of the building work. They'll both be happy to answer any questions you have.

Fully involved
Your new home will quickly be moulded to your personal choices. So will our service. Once you tell us how you want to keep in touch, whether by phone, text, email, our custom designed app or via our website, that's how we'll keep you regularly updated and informed. You'll be able to access all the records of meetings, and see what happens next.

Make it your own
Even before you move in, there's the excitement of planning your interior. Choosing tiles and worktops, making decisions about appliances. We'll help wherever we can. Our Visualiser, for example, can help you make selections online then see them for real in the Sales Centre. Already, it's becoming your own, personal, space.

At a safe time during building, we'll invite you to visit your new home for a Progress Meeting where you can see the craftsmanship and attention to detail for yourself before it's covered up by fittings and finishes.

A place to grow
For us, the mark of success is seeing every home become unique, an individual reflection of the people who live there, and watching it become part of a thriving community.

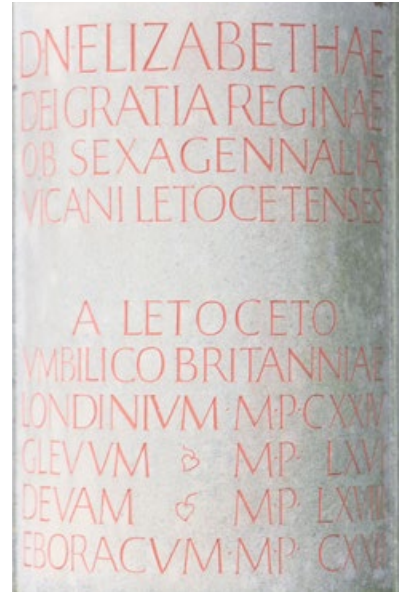
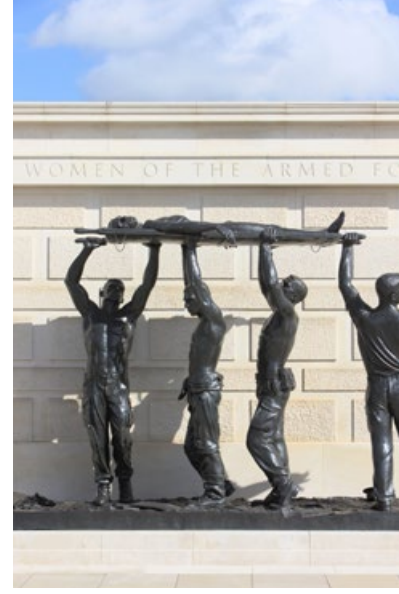
By creating sustainable homes, in sustainable communities, we're helping to build a sustainable future for everyone. Including ourselves.



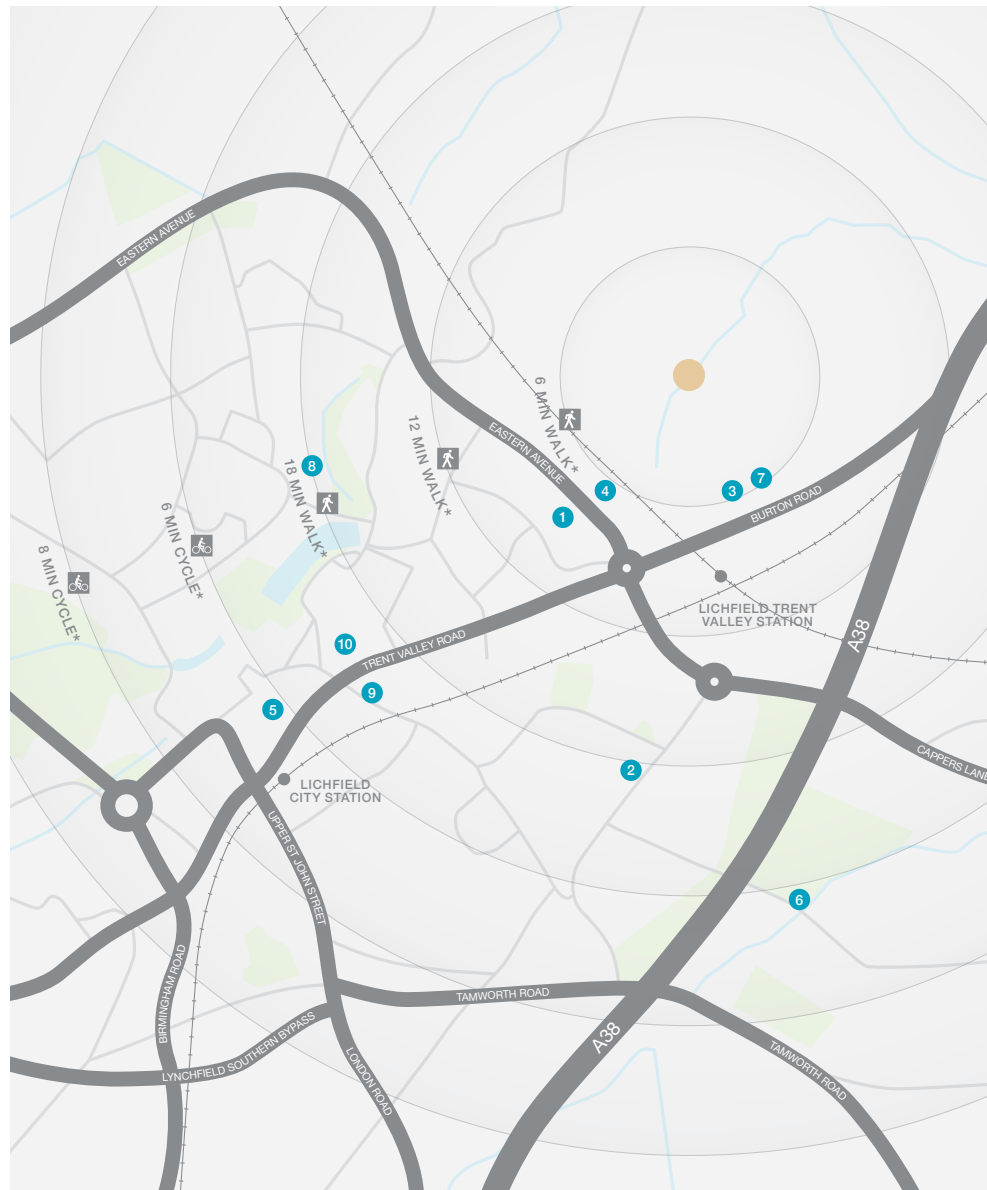
Lichfield is a Purple Flag city, awarded for the variety and safety of its entertainment and nightlife. In addition to live music and comedy in the local pubs, the lively mix of cultural events ranges from an annual Food and Drink Festival and Proms in the Park to music, drama and live screenings of major shows at the Lichfield Garrick Theatre.

For outdoor leisure, Streethay has several parks and playgrounds, including Roman Heights District Park at the centre of the village, and there are football pitches a few yards from The Choristers. A mile away, Coventry Canal towpath leads past colourful pleasure craft, and Darnford Moors, two miles away, is the nearest of a number of golf clubs in the area.

Streethay Primary School, ten minutes' walk from the development, is assessed by Ofsted as 'Outstanding' across all areas. The Choristers is also in the catchment area for Nether Stowe School, a little over a mile away. For medical care, the Westgate Practice in Greenhill Health Centre is the nearest of the GP practices covering Streethay, and there is a dental surgery, Guy's Dental Practice, across the road from Greenhill Health Centre.

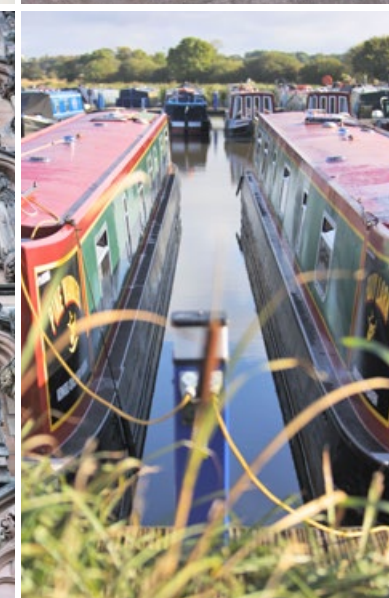
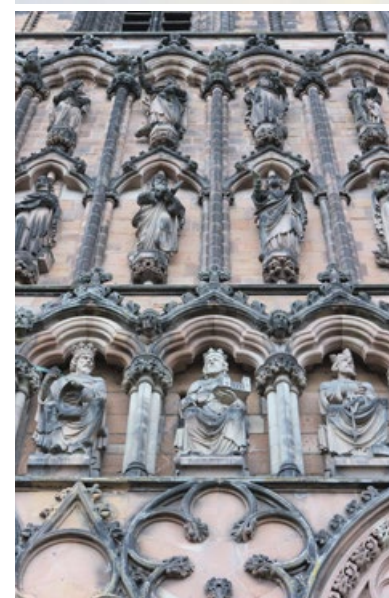
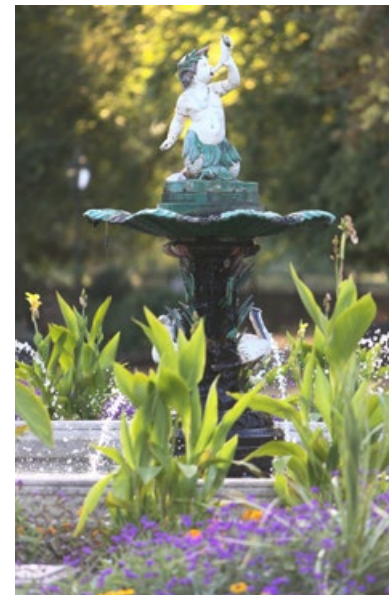


When you leave the car at home and explore the local area by foot or bicycle, you get to know it so much better. And by using local shops and services, you'll help to keep the neighbourhood vibrant and prosperous. Every place has its own personality, and once you move in you'll soon find your favourite walks, and the shops you like best. As a starting point this map shows some of the most useful features and services within a short stroll or bike ride.



- 1 Trent Valley Post Office
17 Eastern Avenue
01543 263 004
- 2 Touchwood Pharmacy
3 Boley Park Shopping Centre
0345 026 9566
- 3 Co-op convenience store
Unit 1 Streethay Local Centre
01543 221 539
- 4 Gym Unity
Eastern Avenue WS13 6UY
01543 268 833
- 5 Lichfield Garrick Theatre
Castle Dyke
01543 412 121
- 6 Darnford Moors Golf Club
Darnford Lane
01543 256 661
- 7 Streethay Primary School
Yoxall Wy
01543 396 180
- 8 Nether Stowe School
St Chad's Road
01543 263 446
- 9 The Westgate Practice
Greenhill Health Centre,
Church Street
01543 416 633
- 10 Guy's Dental Practice
11 Church Street
01543 262 825

* Times stated are averages based on approximate distances and would be dependent on the route taken.
Based on:
0.5km = 5 to 7 mins walk
1.0km = 10 to 14 mins walk
1.5km = 15 to 21 mins walk
2.0km = 5 to 8 mins cycle
2.5km = 6 to 10 mins cycle



Contact Us

Development opening times
Thursday – Monday
10:30am – 5:30pm
millerhomes.co.uk
0330 029 6836

From Birmingham

Follow Tyburn Road and Kingsbury Road to Minworth Island roundabout. Take the first exit and follow the A38 through Bassett's Pole roundabout. After another five and a half miles, at Swinfen Interchange take the third exit. One and a half miles on, leave the A38 to join the A5192 for Lichfield. Go straight on at the first roundabout, then at the next take the fourth exit, for Burton. Immediately after entering Streethay, turn left to follow the winding Oak Way for 600 yards then turn left into Woodlark Way. Take the first left into Thompson Way, then the next left into The Choristers

From Derby and the north

Follow the A38 southbound past Burton upon Trent. After passing the entrance to Streethay Wharf boatyards on the left, bear left to leave, then pass under, the A38. At traffic lights, turn right into Thompson Way. After just over half a mile, turn right into The Choristers.

Sat Nav
WS13 8WN



Registered Developer

Important Notice:
Although every care has been taken to ensure the accuracy of all the information given, the contents do not form part of any contract, or constitute a representation or warranty, and, as such, should be treated as a guide only. Interested parties should check with the Development Sales Manager and confirm all details with their solicitor. The developer reserves the right to amend the specification, as necessary, without prior notice, but to an equal or higher standard. Please note that items specified in literature and showhomes may depict appliances, fittings and decorative finishes that do not form part of the standard specification. The project is a new development which is currently under construction. Measurements provided have not been surveyed on-site. The measurements have been taken from architect's plans, and, as such, may be subject to variation during the course of construction. Not all the units described have been completed at the time of going to print and measurements and dimensions should be checked with the Development Sales Manager and confirmed with solicitors. The location of affordable housing is indicative and the tenure of homes may be subject to change.

the place to be[®]

Why Miller Homes?

We've been building homes since 1934, that's three generations of experience. We've learned a lot about people and that's made a big difference to what we do and how we do it.

We're enormously proud of the homes we build, combining traditional craftsmanship with new ideas like low carbon technologies. The big difference is that we don't stop caring once we've finished the building, or when we've sold the house, or even once you've moved in. We're there when you need us, until you're settled, satisfied and inviting your friends round.



5 stars for customer satisfaction

Development Opening Times

Please see millerhomes.co.uk for development opening times or call 0330 0296 836

Sat Nav: WS13 8WN

millerhomes.co.uk

millerhomes

the place to be®